

A2533

Leader in Biomolecular Solutions for Life Science



## RPS3 Rabbit pAb

Catalog No.: A2533

8 Publications

### Basic Information

#### Observed MW

33kDa

#### Calculated MW

27kDa

#### Category

Polyclonal Antibody

#### Applications

WB,IHC-P,IF/ICC,ELISA

#### Cross-Reactivity

Human,Mouse,Rat

### Background

Ribosomes, the organelles that catalyze protein synthesis, consist of a small 40S subunit and a large 60S subunit. Together these subunits are composed of 4 RNA species and approximately 80 structurally distinct proteins. This gene encodes a ribosomal protein that is a component of the 40S subunit, where it forms part of the domain where translation is initiated. The protein belongs to the S3P family of ribosomal proteins. Studies of the mouse and rat proteins have demonstrated that the protein has an extraribosomal role as an endonuclease involved in the repair of UV-induced DNA damage. The protein appears to be located in both the cytoplasm and nucleus but not in the nucleolus. Higher levels of expression of this gene in colon adenocarcinomas and adenomatous polyps compared to adjacent normal colonic mucosa have been observed. This gene is co-transcribed with the small nucleolar RNA genes U15A and U15B, which are located in its first and fifth introns, respectively. As is typical for genes encoding ribosomal proteins, there are multiple processed pseudogenes of this gene dispersed through the genome. Multiple alternatively spliced transcript variants encoding different isoforms have been found for this gene.

### Recommended Dilutions

WB	1:500 - 1:1000
IHC-P	1:50 - 1:200
IF/ICC	1:50 - 1:200
ELISA	Recommended starting concentration is 1 µg/mL. Please optimize the concentration based on your specific assay requirements.

### Contact



[www.abclonal.com](http://www.abclonal.com)

### Immunogen Information

#### Gene ID

6188

#### Swiss Prot

P23396

#### Immunogen

Recombinant protein (or fragment). This information is considered to be commercially sensitive.

#### Synonyms

S3; uS3; RPS3

### Product Information

#### Source

Rabbit

#### Isotype

IgG

#### Purification

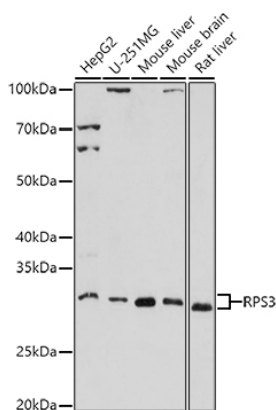
Affinity purification

#### Storage

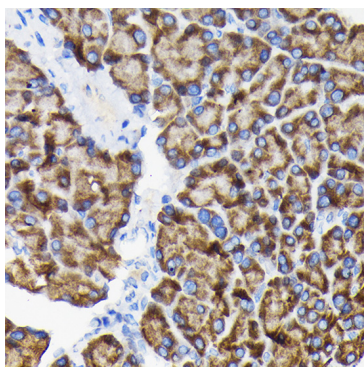
Store at -20°C. Avoid freeze / thaw cycles.

Buffer: PBS with 0.02% sodium azide, 50% glycerol, pH7.3.

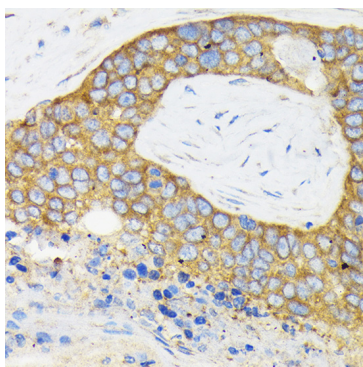
## Validation Data



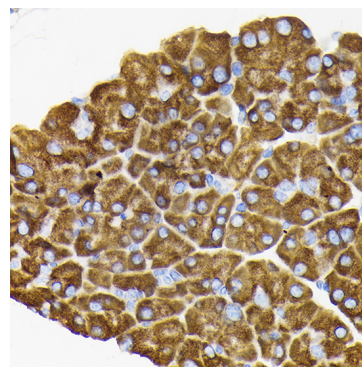
Western blot analysis of various lysates using RPS3 Rabbit pAb (A2533) at 1:1000 dilution.  
 Secondary antibody: HRP-conjugated Goat anti-Rabbit IgG (H+L) (AS014) at 1:10000 dilution.  
 Lysates/proteins: 25µg per lane.  
 Blocking buffer: 3% nonfat dry milk in TBST.  
 Detection: ECL Basic Kit (RM00020).  
 Exposure time: 180s.



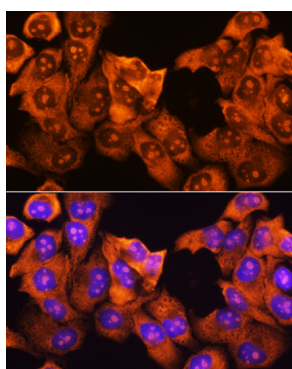
Immunohistochemistry analysis of paraffin-embedded Rat pancreas using RPS3 Rabbit pAb (A2533) at dilution of 1:100 (40x lens). Microwave antigen retrieval performed with 0.01M Tris/EDTA Buffer (pH 9.0) prior to IHC staining.



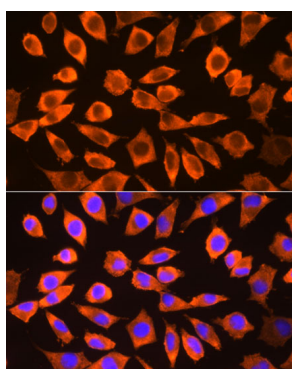
Immunohistochemistry analysis of paraffin-embedded Human esophageal cancer using RPS3 Rabbit pAb (A2533) at dilution of 1:100 (40x lens). Microwave antigen retrieval performed with 0.01M Tris/EDTA Buffer (pH 9.0) prior to IHC staining.



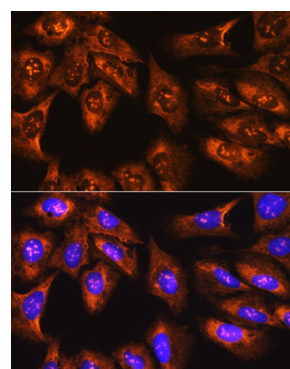
Immunohistochemistry analysis of paraffin-embedded Mouse pancreas using RPS3 Rabbit pAb (A2533) at dilution of 1:100 (40x lens). Microwave antigen retrieval performed with 0.01M Tris/EDTA Buffer (pH 9.0) prior to IHC staining.



Immunofluorescence analysis of HeLa cells using RPS3 Rabbit pAb (A2533) at dilution of 1:100. Secondary antibody: Cy3-conjugated Goat anti-Rabbit IgG (H+L) (AS007) at 1:500 dilution. Blue: DAPI for nuclear staining.



Immunofluorescence analysis of L929 cells using RPS3 Rabbit pAb (A2533) at dilution of 1:100. Secondary antibody: Cy3-conjugated Goat anti-Rabbit IgG (H+L) (AS007) at 1:500 dilution. Blue: DAPI for nuclear staining.



Immunofluorescence analysis of U-2 OS cells using RPS3 Rabbit pAb (A2533) at dilution of 1:100. Secondary antibody: Cy3-conjugated Goat anti-Rabbit IgG (H+L) (AS007) at 1:500 dilution. Blue: DAPI for nuclear staining.