

A2547

Leader in Biomolecular Solutions for Life Science



## NF- $\kappa$ B p65/RelA Rabbit pAb

Catalog No.: A2547

164 Publications

### Basic Information

#### Observed MW

65kDa

#### Calculated MW

60kDa

#### Category

Polyclonal Antibody

#### Applications

WB,IHC-P,IF/ICC,ELISA

#### Cross-Reactivity

Human,Mouse,Rat

### Background

NF- $\kappa$ B is a ubiquitous transcription factor involved in several biological processes. It is held in the cytoplasm in an inactive state by specific inhibitors. Upon degradation of the inhibitor, NF- $\kappa$ B moves to the nucleus and activates transcription of specific genes. NF- $\kappa$ B is composed of NFKB1 or NFKB2 bound to either REL, RELA, or RELB. The most abundant form of NF- $\kappa$ B is NFKB1 complexed with the product of this gene, RELA. Four transcript variants encoding different isoforms have been found for this gene.

### Recommended Dilutions

WB 1:500 - 1:2000

IHC-P 1:100 - 1:500

IF/ICC 1:50 - 1:200

ELISA Recommended starting concentration is 1  $\mu$ g/mL. Please optimize the concentration based on your specific assay requirements.

### Immunogen Information

#### Gene ID

5970

#### Swiss Prot

Q04206

#### Immunogen

Recombinant protein (or fragment). This information is considered to be commercially sensitive.

#### Synonyms

p65; CMCU; NFKB3; AIF3BL3; NF- $\kappa$ B p65/RelA

### Product Information

#### Source

Rabbit

#### Isotype

IgG

#### Purification

Affinity purification

#### Storage

Store at -20°C. Avoid freeze / thaw cycles.

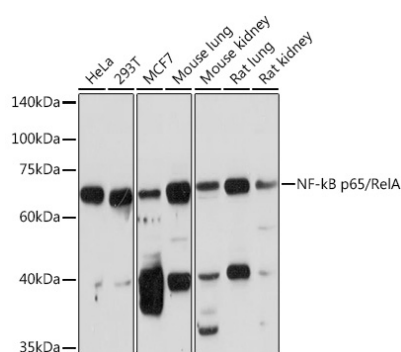
Buffer: PBS containing 50% glycerol, preserved with proclin300 or sodium azide (as specified on the Certificate of Analysis), pH 7.3.

### Contact



[www.abclonal.com](http://www.abclonal.com)

## Validation Data



Western blot analysis of various lysates using NF-kB p65/RelA Rabbit pAb (A2547) at 1:1000 dilution.

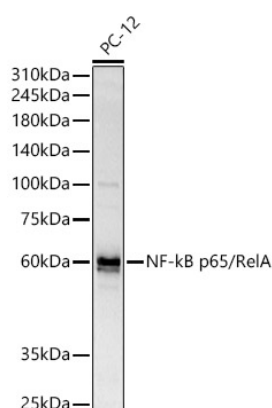
Secondary antibody: HRP-conjugated Goat anti-Rabbit IgG (H+L) (AS014) at 1:10000 dilution.

Lysates/proteins: 25µg per lane.

Blocking buffer: 3% nonfat dry milk in TBST.

Detection: ECL Basic Kit (RM00020).

Exposure time: 180s.



Western blot analysis of various lysates, using NF-kB p65/RelA Rabbit pAb (A2547) at 1:2000 dilution.

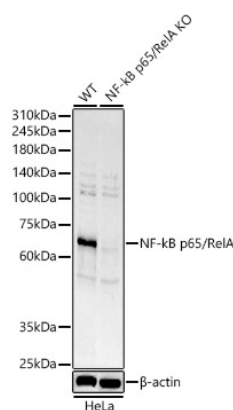
Secondary antibody: HRP-conjugated Goat anti-Rabbit IgG (H+L) (AS014) at 1:10000 dilution.

Lysates/proteins: 25µg per lane.

Blocking buffer: 3% nonfat dry milk in TBST.

Detection: ECL Basic Kit (RM00020).

Exposure time: 20s.



Western blot analysis of lysates from wild type (WT) and NF-kB p65/RelA knockout (KO) HeLa(KO) cells, using NF-kB p65/RelA Rabbit pAb (A2547) at 1:2000 dilution.

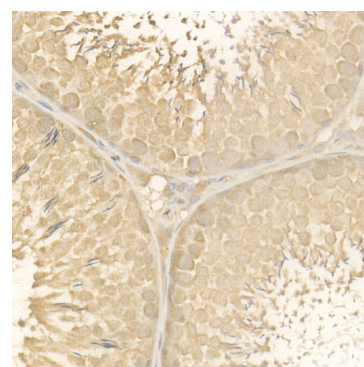
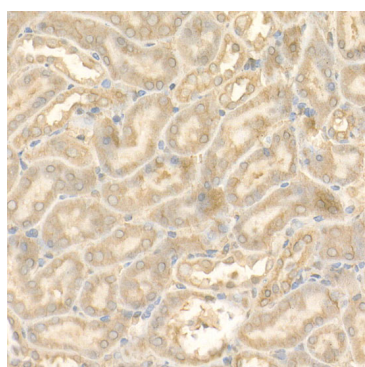
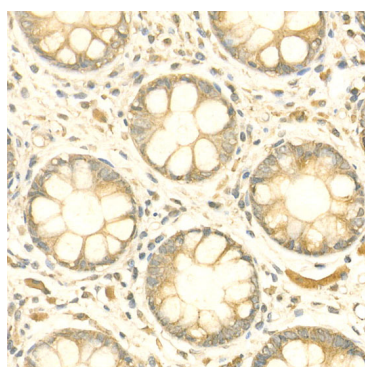
Secondary antibody: HRP-conjugated Goat anti-Rabbit IgG (H+L) (AS014) at 1:10000 dilution.

Lysates/proteins: 25µg per lane.

Blocking buffer: 3% nonfat dry milk in TBST.

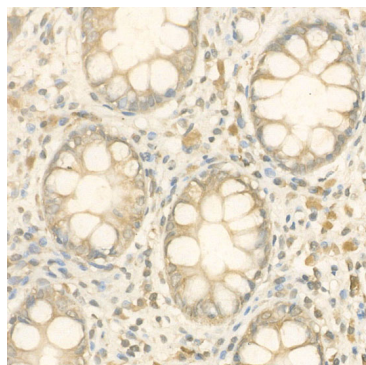
Detection: ECL Basic Kit (RM00020).

Exposure time: 20s.

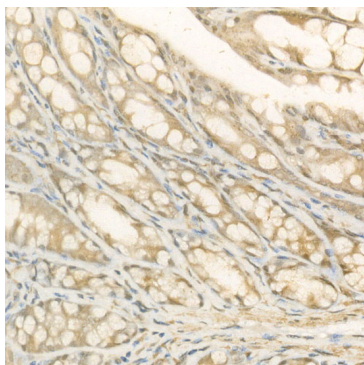


## Validation Data

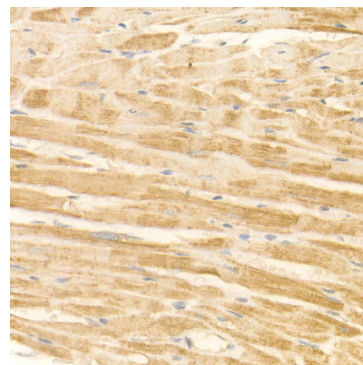
Immunohistochemistry analysis of paraffin-embedded Human colon using [KO Validated] NF-kB p65/RelA Rabbit pAb (A2547) at dilution of 1:200 (40x lens). High pressure antigen retrieval performed with 0.01M Citrate buffer (pH 6.0) prior to IHC staining.



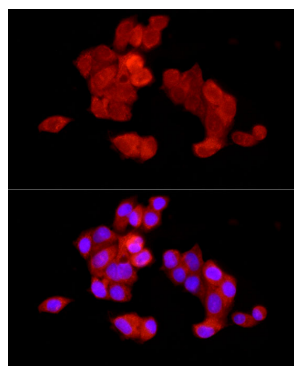
Immunohistochemistry analysis of paraffin-embedded Mouse kidney using [KO Validated] NF-kB p65/RelA Rabbit pAb (A2547) at dilution of 1:200 (40x lens). High pressure antigen retrieval performed with 0.01M Citrate buffer (pH 6.0) prior to IHC staining.



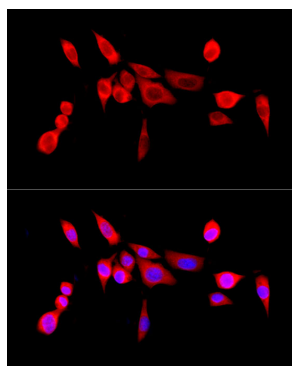
Immunohistochemistry analysis of paraffin-embedded Rat testis using [KO Validated] NF-kB p65/RelA Rabbit pAb (A2547) at dilution of 1:200 (40x lens). High pressure antigen retrieval performed with 0.01M Citrate buffer (pH 6.0) prior to IHC staining.



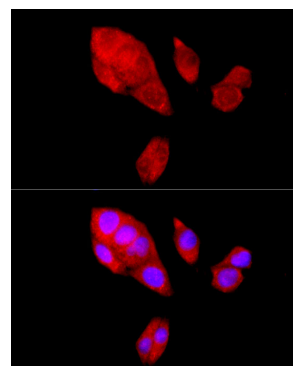
Immunohistochemistry analysis of paraffin-embedded Human colon using NF-kB p65/RelA Rabbit pAb (A2547) at dilution of 1:300 (40x lens). High pressure antigen retrieval performed with 0.01M Citrate buffer (pH 6.0) prior to IHC staining.



Immunohistochemistry analysis of paraffin-embedded Mouse colon using NF-kB p65/RelA Rabbit pAb (A2547) at dilution of 1:300 (40x lens). High pressure antigen retrieval performed with 0.01M Citrate buffer (pH 6.0) prior to IHC staining.



Immunohistochemistry analysis of paraffin-embedded Rat heart using NF-kB p65/RelA Rabbit pAb (A2547) at dilution of 1:300 (40x lens). High pressure antigen retrieval performed with 0.01M Citrate buffer (pH 6.0) prior to IHC staining.



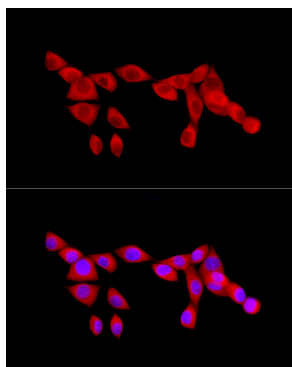
Immunofluorescence analysis of HepG2 cells using [KO Validated] NF-kB p65/RelA Rabbit pAb (A2547) at dilution of 1:200 (40x lens). Secondary antibody: Cy3-conjugated Goat anti-Rabbit IgG (H+L) (AS007) at 1:500 dilution. Blue: DAPI for nuclear staining.

Immunofluorescence analysis of NIH/3T3 cells using [KO Validated] NF-kB p65/RelA Rabbit pAb (A2547) at dilution of 1:200 (40x lens). Secondary antibody: Cy3-conjugated Goat anti-Rabbit IgG (H+L) (AS007) at 1:500 dilution. Blue: DAPI for nuclear staining.

Immunofluorescence analysis of HepG2 cells using NF-kB p65/RelA Rabbit pAb (A2547) at dilution of 1:200 (40x lens). Secondary antibody: Cy3-conjugated Goat anti-Rabbit IgG (H+L) (AS007) at 1:500 dilution. Blue: DAPI for nuclear staining.

## Validation Data

---



Immunofluorescence analysis of NIH/3T3 cells using NF-kB p65/RelA Rabbit pAb (A2547) at dilution of 1:200 (40x lens). Secondary antibody: Cy3-conjugated Goat anti-Rabbit IgG (H+L) (AS007) at 1:500 dilution. Blue: DAPI for nuclear staining.