

A25583

Leader in Biomolecular Solutions for Life Science



NFYA Rabbit mAb

Catalog No.: A25583

Recombinant

1 Publications

Basic Information

Observed MW

37kDa/43kDa

Calculated MW

34kDa/37kDa

Category

SMab Recombinant Monoclonal
Antibody

Applications

WB,IHC-P,IP,ChIP,ELISA

Cross-Reactivity

Human,Mouse,Rat

CloneNo number

ARC66393

Background

The protein encoded by this gene is one subunit of a trimeric complex, forming a highly conserved transcription factor that binds to CCAAT motifs in the promoter regions in a variety of genes. Subunit A associates with a tight dimer composed of the B and C subunits, resulting in a trimer that binds to DNA with high specificity and affinity. The sequence specific interactions of the complex are made by the A subunit, suggesting a role as the regulatory subunit. In addition, there is evidence of post-transcriptional regulation in this gene product, either by protein degradation or control of translation. Further regulation is represented by alternative splicing in the glutamine-rich activation domain, with clear tissue-specific preferences for the two isoforms.

Recommended Dilutions

WB 1:1000 - 1:6000**IP** 0.5µg-4µg antibody for
200µg-400µg extracts
of whole cells**IHC-P** 1:300 - 1:3000**ChIP** 5µg antibody for
10µg-15µg of
Chromatin**ELISA** Recommended starting
concentration is 1
µg/mL. Please optimize
the concentration
based on your specific
assay requirements.

Immunogen Information

Gene ID
4800**Swiss Prot**
P23511

Immunogen

Recombinant protein (or fragment). This information is considered to be commercially sensitive.

Synonyms

HAP2; CBF-A; CBF-B; NF-YA

Product Information

Source
Rabbit**Isotype**
IgG**Purification**
Affinity purification

Storage

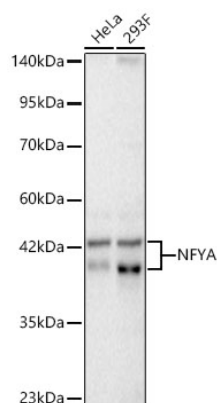
Store at -20°C. Avoid freeze / thaw cycles.

Buffer: PBS containing 50% glycerol and 0.05% BSA, preserved with proclin300 or sodium azide (as specified on the Certificate of Analysis), pH 7.3.

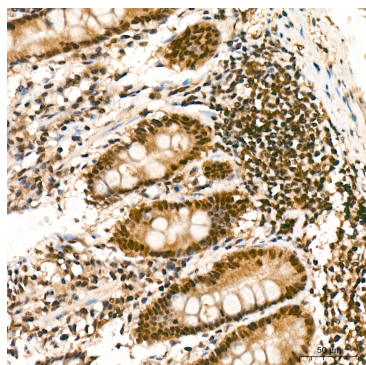
Contact

www.abclonal.com

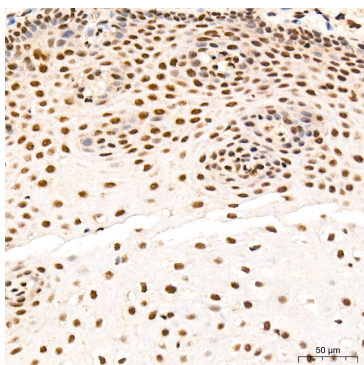
Validation Data



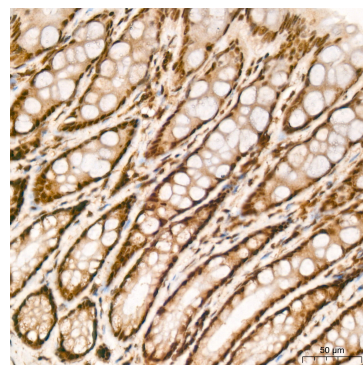
Western blot analysis of various lysates using NFYA Rabbit mAb (A25583) at 1:1000 dilution.
 Secondary antibody: HRP-conjugated Goat anti-Rabbit IgG (H+L) (AS014) at 1:10000 dilution.
 Lysates/proteins: 25 µg per lane.
 Blocking buffer: 3% nonfat dry milk in TBST.
 Detection: ECL Basic Kit (RM00020).
 Exposure time: 10s.



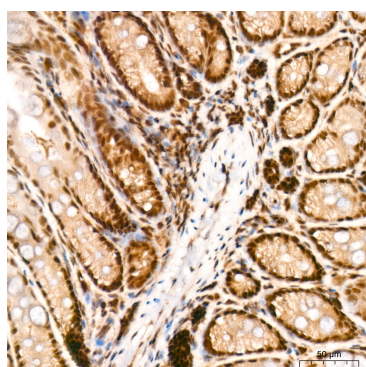
Immunohistochemistry analysis of paraffin-embedded Human colon tissue using NFYA Rabbit mAb (A25583) at a dilution of 1:300 (40x lens). High pressure antigen retrieval was performed with 0.01 M citrate buffer (pH 6.0) prior to IHC staining.



Immunohistochemistry analysis of paraffin-embedded Human esophagus tissue using NFYA Rabbit mAb (A25583) at a dilution of 1:300 (40x lens). High pressure antigen retrieval was performed with 0.01 M citrate buffer (pH 6.0) prior to IHC staining.

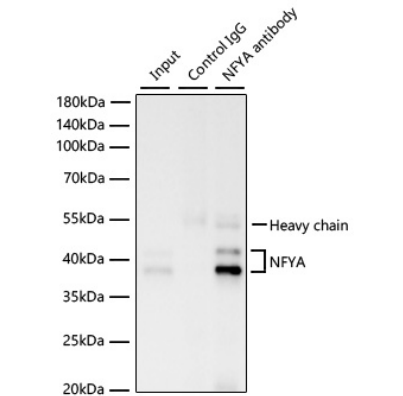


Immunohistochemistry analysis of paraffin-embedded Rat colon tissue using NFYA Rabbit mAb (A25583) at a dilution of 1:300 (40x lens). High pressure antigen retrieval was performed with 0.01 M citrate buffer (pH 6.0) prior to IHC staining.

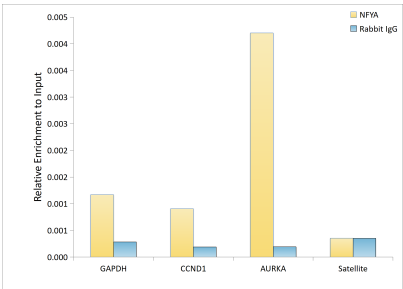


Immunohistochemistry analysis of paraffin-embedded Mouse colon tissue using NFYA Rabbit mAb (A25583) at a dilution of 1:300 (40x lens). High pressure antigen retrieval was performed with 0.01 M citrate buffer (pH 6.0) prior to IHC staining.

Validation Data



Immunoprecipitation of NFYA from 300 µg extracts of 293F cells was performed using 1 µg of NFYA Rabbit mAb (A25583). Rabbit Control IgG (AC005) was used to precipitate the Control IgG sample. IP samples were eluted with 1X Laemmli Buffer. The Input lane represents 10% of the total input. Western blot analysis of immunoprecipitates was conducted using NFYA Rabbit mAb (A25583) at a dilution of 1:1000.



Chromatin immunoprecipitation was performed with cross-linked chromatin from 293T cells, using NFYA Rabbit mAb (A25583) and rabbit IgG (AC042). The amount of immunoprecipitated DNA was checked by quantitative PCR. Histogram compares the ratio of the immunoprecipitated DNA versus the input.