

A2568

Leader in Biomolecular Solutions for Life Science



[KO Validated] AIF Rabbit pAb

Catalog No.: A2568

KO Validated

8 Publications

Basic Information

Observed MW

67kDa

Calculated MW

67kDa

Category

Polyclonal Antibody

Applications

WB,IHC-P,IF/ICC,ELISA

Cross-Reactivity

Human,Mouse,Rat

Background

This gene encodes a flavoprotein essential for nuclear disassembly in apoptotic cells, and it is found in the mitochondrial intermembrane space in healthy cells. Induction of apoptosis results in the translocation of this protein to the nucleus where it affects chromosome condensation and fragmentation. In addition, this gene product induces mitochondria to release the apoptogenic proteins cytochrome c and caspase-9. Mutations in this gene cause combined oxidative phosphorylation deficiency 6 (COXPD6), a severe mitochondrial encephalomyopathy, as well as Cowchock syndrome, also known as X-linked recessive Charcot-Marie-Tooth disease-4 (CMTX-4), a disorder resulting in neuropathy, and axonal and motor-sensory defects with deafness and cognitive disability. Alternative splicing results in multiple transcript variants. A related pseudogene has been identified on chromosome 10.

Recommended Dilutions

WB 1:500 - 1:1000

IHC-P 1:50 - 1:200

IF/ICC 1:50 - 1:200

ELISA Recommended starting concentration is 1 µg/mL. Please optimize the concentration based on your specific assay requirements.

Immunogen Information

Gene ID

9131

Swiss Prot

O95831

Immunogen

Recombinant protein (or fragment). This information is considered to be commercially sensitive.

Synonyms

AIF; AUNX1; CMT2D; CMTX4; COWCK; DFNX5; NADMR; NAMSD; PDCC8; COXPD6; SEMDHL; IF

Product Information

Source

Rabbit

Isotype

IgG

Purification

Affinity purification

Storage

Store at -20°C. Avoid freeze / thaw cycles.

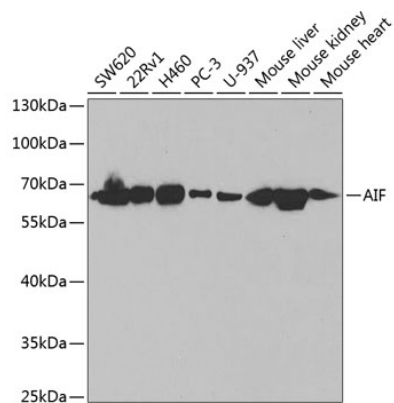
Buffer: PBS with 0.02% sodium azide, 50% glycerol, pH7.3.

Contact



www.abclonal.com

Validation Data

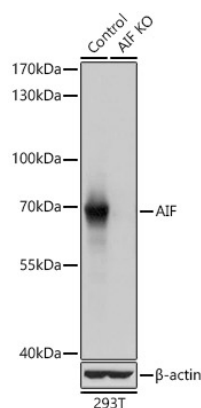


Western blot analysis of various lysates using [KO Validated] AIF Rabbit pAb (A2568) at 1:1000 dilution.

Secondary antibody: HRP-conjugated Goat anti-Rabbit IgG (H+L) (AS014) at 1:10000 dilution.

Lysates/proteins: 25µg per lane.

Blocking buffer: 3% nonfat dry milk in TBST.



Western blot analysis of lysates from wild type (WT) and AIF knockout (KO) 293T cells, using [KO Validated] AIF Rabbit pAb (A2568) at 1:1000 dilution.

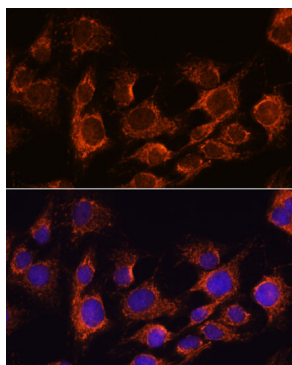
Secondary antibody: HRP-conjugated Goat anti-Rabbit IgG (H+L) (AS014) at 1:10000 dilution.

Lysates/proteins: 25µg per lane.

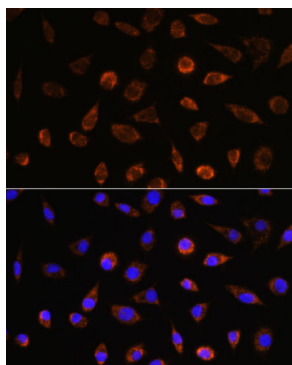
Blocking buffer: 3% nonfat dry milk in TBST.

Detection: ECL Basic Kit (RM00020).

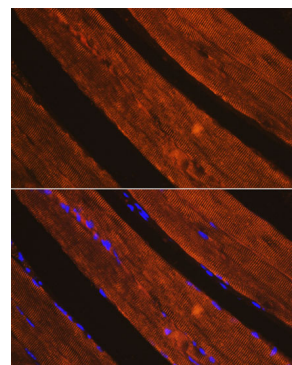
Exposure time: 1s.



Immunofluorescence analysis of C6 cells using [KO Validated] AIF Rabbit pAb (A2568) at dilution of 1:100. Secondary antibody: Cy3-conjugated Goat anti-Rabbit IgG (H+L) (AS007) at 1:500 dilution. Blue: DAPI for nuclear staining.

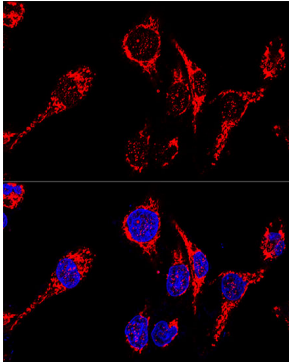


Immunofluorescence analysis of L929 cells using [KO Validated] AIF Rabbit pAb (A2568) at dilution of 1:100. Secondary antibody: Cy3-conjugated Goat anti-Rabbit IgG (H+L) (AS007) at 1:500 dilution. Blue: DAPI for nuclear staining.



Immunofluorescence analysis of paraffin-embedded mouse skeletal muscle using [KO Validated] AIF Rabbit pAb (A2568) at dilution of 1:100. Secondary antibody: Cy3-conjugated Goat anti-Rabbit IgG (H+L) (AS007) at 1:500 dilution. Blue: DAPI for nuclear staining.

Validation Data



Confocal immunofluorescence analysis of HeLa cells using [KO Validated] AIF Rabbit pAb (A2568) at dilution of 1:200. Blue: DAPI for nuclear staining.