

A25753

Leader in Biomolecular Solutions for Life Science



CD146/MCAM Rabbit mAb

Catalog No.: A25753

Recombinant

Basic Information

Observed MW

120kDa

Calculated MW

72kDa

Category

SMab Recombinant Monoclonal
Antibody

Applications

WB,IF/ICC,ELISA

Cross-Reactivity

Human

CloneNo number

ARC68503

Background

Involved in glomerular filtration and vascular wound healing. Acts upstream of or within angiogenesis. Located in external side of plasma membrane. Biomarker of chronic obstructive pulmonary disease and uveal melanoma.

Recommended Dilutions

WB 1:1000 - 1:4000

IF/ICC 1:200 - 1:800

ELISA Recommended starting concentration is 1 µg/mL. Please optimize the concentration based on your specific assay requirements.

Immunogen Information

Gene ID

4162

Swiss Prot

P43121

Immunogen

Recombinant protein (or fragment). This information is considered to be commercially sensitive.

Synonyms

CD146; MUC18; HEMCAM; METCAM; MeICAM

Contact

 www.abclonal.com

Product Information

Source

Rabbit

Isotype

IgG

Purification

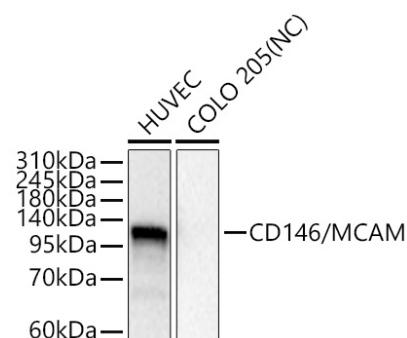
Affinity purification

Storage

Store at -20°C. Avoid freeze / thaw cycles.

Buffer: PBS containing 50% glycerol and 0.05% BSA, preserved with proclin300 or sodium azide (as specified on the Certificate of Analysis), pH 7.3.

Validation Data



Western blot analysis of various lysates using CD146/MCAM Rabbit mAb (A25753) at 1:1000 dilution incubated overnight at 4°C.

Secondary antibody: HRP-conjugated Goat anti-Rabbit IgG (H+L) (AS014) at 1:10000 dilution.

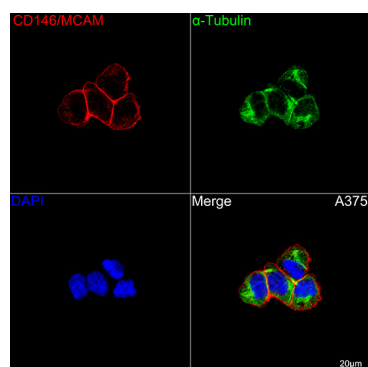
Lysates/proteins: 25 µg per lane.

Blocking buffer: 3% nonfat dry milk in TBST.

Detection: ECL Basic Kit (RM00020)

Negative control (NC): COLO 205

Exposure time: 30 s.



Confocal imaging of A375 cells using CD146/MCAM Rabbit mAb (A25753, dilution 1:200) followed by a further incubation with Cy3 Goat Anti-Rabbit IgG (H+L) (AS007, dilution 1:500) (Red). The cells were counterstained with α-Tubulin Mouse mAb (AC012, dilution 1:400) followed by incubation with ABflo® 488-conjugated Goat Anti-Mouse IgG (H+L) Ab (AS076, dilution 1:500) (Green). DAPI was used for nuclear staining (Blue). Objective: 100x.