

A25981

Leader in Biomolecular Solutions for Life Science



[KD Validated] TFEB Rabbit mAb

Catalog No.: A25981

Recombinant

Basic Information

Observed MW

65-70kDa

Calculated MW

44kDa/53kDa

Category

SMab Recombinant Monoclonal
Antibody

Applications

WB,IHC-P,ChIP,ELISA

Cross-Reactivity

Human,Mouse,Rat

CloneNo number

ARC68094

Background

Enables DNA-binding transcription factor activity; enzyme binding activity; and transcription cis-regulatory region binding activity. Involved in several processes, including cellular response to amino acid starvation; lysosome localization; and positive regulation of autophagy. Located in cytosol; lysosomal membrane; and nucleoplasm.

Recommended Dilutions

WB 1:1000 - 1:2000

IHC-P 1:200 - 1:800

ELISA Recommended starting concentration is 1 µg/mL. Please optimize the concentration based on your specific assay requirements.

ChIP 5µg antibody for 10µg-15µg of Chromatin

Contact

 www.abclonal.com

Immunogen Information

Gene ID

7942

Swiss Prot

P19484

Immunogen

Recombinant protein (or fragment). This information is considered to be commercially sensitive.

Synonyms

TCFEB; BHLHE35; ALPHATFEB

Product Information

Source

Rabbit

Isotype

IgG

Purification

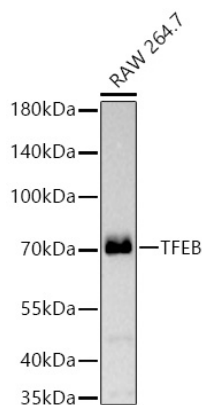
Affinity purification

Storage

Store at -20°C. Avoid freeze / thaw cycles.

Buffer: PBS containing 50% glycerol and 0.05% BSA, preserved with proclin300 or sodium azide (as specified on the Certificate of Analysis), pH 7.3.

Validation Data



Western blot analysis of lysates from RAW 264.7 cells using [KD Validated] TFEB Rabbit mAb (A25981) at 1:1000 dilution incubated overnight at 4°C.

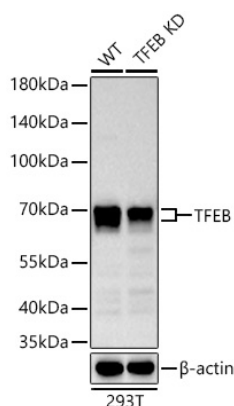
Secondary antibody: HRP-conjugated Goat anti-Rabbit IgG (H+L) (AS014) at 1:10000 dilution.

Lysates/proteins: 25 µg per lane.

Blocking buffer: 3% nonfat dry milk in TBST.

Detection: ECL Basic Kit (RM00020).

Exposure time: 45s.



Western blot analysis of lysates from wild type (WT) and TFEB knockdown (KD) 293T cells using [KD Validated] TFEB Rabbit mAb (A25981) at 1:1000 dilution incubated overnight at 4°C.

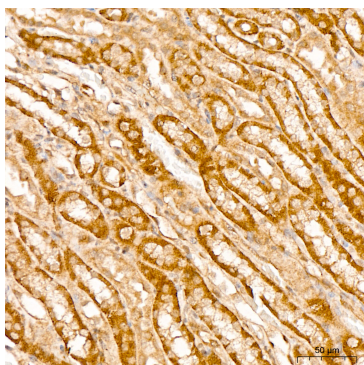
Secondary antibody: HRP-conjugated Goat anti-Rabbit IgG (H+L) (AS014) at 1:10000 dilution.

Lysates/proteins: 25 µg per lane.

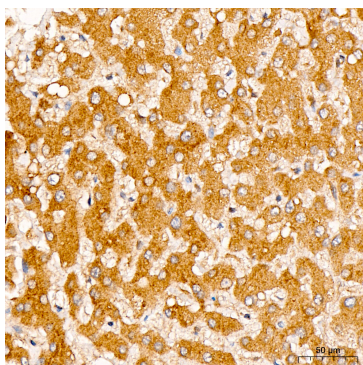
Blocking buffer: 3% nonfat dry milk in TBST.

Detection: ECL Basic Kit (RM00020).

Exposure time: 90s.



Immunohistochemistry analysis of paraffin-embedded Rat kidney tissue using [KD Validated] TFEB Rabbit mAb (A25981) at a dilution of 1:200 (40x lens). High pressure antigen retrieval performed with 0.01M Citrate Buffer (pH 6.0) prior to IHC staining.



Immunohistochemistry analysis of paraffin-embedded Human liver tissue using [KD Validated] TFEB Rabbit mAb (A25981) at a dilution of 1:200 (40x lens). High pressure antigen retrieval performed with 0.01M Citrate Buffer (pH 6.0) prior to IHC staining.