

A2616

Leader in Biomolecular Solutions for Life Science



RAP2A Rabbit pAb

Catalog No.: A2616

Basic Information

Observed MW

21kDa

Calculated MW

21kDa

Category

Polyclonal Antibody

Applications

WB,ELISA

Cross-Reactivity

Human,Mouse

Background

Enables GTPase activity; guanyl ribonucleotide binding activity; and magnesium ion binding activity. Involved in several processes, including actin cytoskeleton reorganization; microvillus assembly; and positive regulation of protein autophosphorylation. Acts upstream of or within establishment of protein localization. Located in plasma membrane and recycling endosome membrane.

Recommended Dilutions

WB 1:500 - 1:1000

ELISA Recommended starting concentration is 1 µg/mL. Please optimize the concentration based on your specific assay requirements.

Immunogen Information

Gene ID

5911

Swiss Prot

P10114

Immunogen

Recombinant protein (or fragment). This information is considered to be commercially sensitive.

Synonyms

KREV; RAP2; K-REV; RbBP-30; RAP2A

Contact

 www.abclonal.com

Product Information

Source

Rabbit

Isotype

IgG

Purification

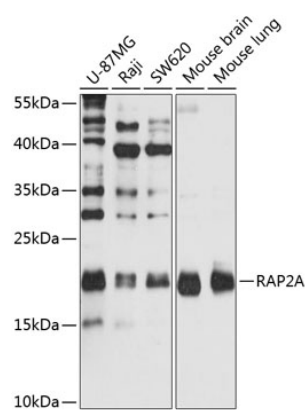
Affinity purification

Storage

Store at -20°C. Avoid freeze / thaw cycles.

Buffer: PBS with 0.02% sodium azide, 50% glycerol, pH 7.3.

Validation Data



Western blot analysis of various lysates using RAP2A Rabbit pAb (A2616) at 1:1000 dilution.
Secondary antibody: HRP-conjugated Goat anti-Rabbit IgG (H+L) (AS014) at 1:10000 dilution.
Lysates/proteins: 25µg per lane.
Blocking buffer: 3% nonfat dry milk in TBST.
Detection: ECL Basic Kit (RM00020).
Exposure time: 30s.