

A26858

Leader in Biomolecular Solutions for Life Science

## [KD Validated] METTL3 Rabbit mAb

Catalog No.: A26858

Recombinant

### Basic Information

#### Observed MW

75kDa

#### Calculated MW

64kDa

#### Category

SMab Recombinant Monoclonal  
Antibody

#### Applications

WB,IHC-P,IP,ChIP,ELISA

#### Cross-Reactivity

Human,Mouse,Rat

### Background

This gene encodes the 70 kDa subunit of MT-A which is part of N6-adenosine-methyltransferase. This enzyme is involved in the posttranscriptional methylation of internal adenosine residues in eukaryotic mRNAs, forming N6-methyladenosine.

### Recommended Dilutions

**WB** 1:5000 - 1:10000

**IHC-P** 1:200 - 1:2000

**IP** 0.5µg-4µg antibody for  
200µg-400µg extracts  
of whole cells

**ChIP** 5µg antibody for  
10µg-15µg of  
Chromatin

**ELISA** Recommended starting  
concentration is 1  
µg/mL. Please optimize  
the concentration  
based on your specific  
assay requirements.

### Immunogen Information

#### Gene ID

56339

#### Swiss Prot

Q86U44

#### Immunogen

Recombinant protein (or fragment). This information is considered to be commercially sensitive.

#### Synonyms

M6A; IME4; Spo8; MT-A70; hMETTL3

### Product Information

#### Source

Rabbit

#### Isotype

IgG

#### Purification

Affinity purification

#### Storage

Store at -20°C. Avoid freeze / thaw cycles.

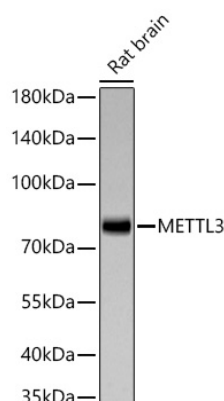
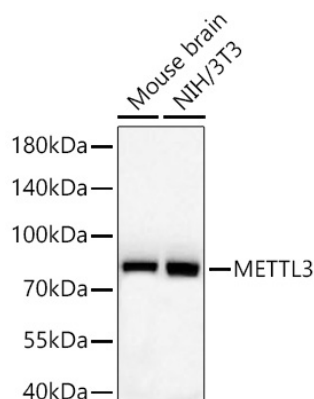
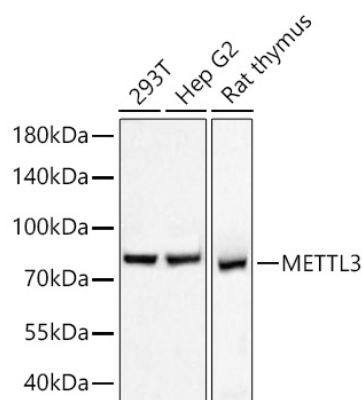
Buffer: PBS with 0.09% Sodium azide, 0.05% BSA, 50% glycerol, pH7.3.

### Contact

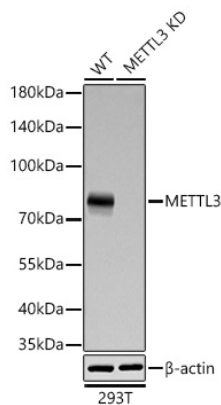


[www.abclonal.com](http://www.abclonal.com)

## Validation Data



## Validation Data



Western blot analysis of lysates from wild type (WT) and METTL3 knockdown (KD) 293T cells using [KD Validated] METTL3 Rabbit mAb (A26858) at 1:1000 dilution incubated overnight at 4°C.

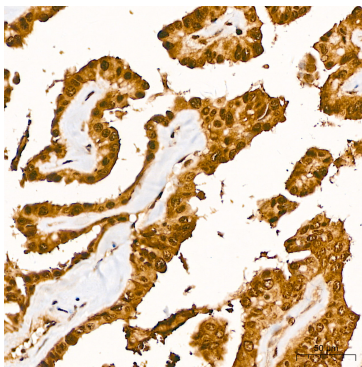
Secondary antibody: HRP-conjugated Goat anti-Rabbit IgG (H+L) (AS014) at 1:10000 dilution.

Lysates/proteins: 25 µg per lane.

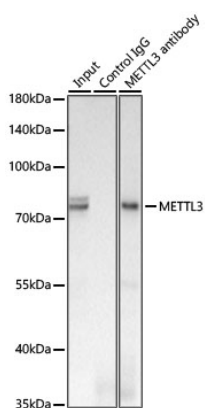
Blocking buffer: 3% nonfat dry milk in TBST.

Detection: ECL Basic Kit (RM00020).

Exposure time: 15s.



Immunohistochemistry analysis of paraffin-embedded Human thyroid cancer tissue using [KD Validated] METTL3 Rabbit mAb (A26858) at a dilution of 1:200 (40x lens). High pressure antigen retrieval performed with 0.01M Citrate Buffer (pH 6.0) prior to IHC staining.



Immunoprecipitation of METTL3 from 300 µg extracts of HepG2 cells was performed using 0.5 µg of [KD Validated] METTL3 Rabbit mAb (A26858). Rabbit IgG isotype control (AC042) was used to precipitate the Control IgG sample. IP samples were eluted with 1X Laemmli Buffer. The Input lane represents 10% of the total input. Western blot analysis of immunoprecipitates was conducted using [KD Validated] METTL3 Rabbit mAb (A26858) at a dilution of 1 : 1000.