

A2686

Leader in Biomolecular Solutions for Life Science



CDK20 Rabbit pAb

Catalog No.: A2686

Basic Information

Observed MW

Calculated MW

39kDa

Category

Polyclonal Antibody

Applications

IHC-P,ELISA

Cross-Reactivity

Rat

Background

The protein encoded by this gene contains a kinase domain most closely related to the cyclin-dependent protein kinases. The encoded kinase may activate cyclin-dependent kinase 2 and is involved in cell growth. Alternatively spliced transcript variants encoding distinct isoforms have been reported.

Recommended Dilutions

IHC-P 1:50 - 1:100

ELISA Recommended starting concentration is 1 µg/mL. Please optimize the concentration based on your specific assay requirements.

Immunogen Information

Gene ID

23552

Swiss Prot

Q8IZL9

Immunogen

Synthetic peptide. This information is considered to be commercially sensitive.

Synonyms

P42; CCRK; CDCH; PNQALRE; CDK20

Contact



www.abclonal.com

Product Information

Source

Rabbit

Isotype

IgG

Purification

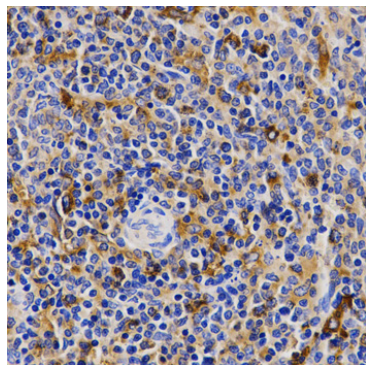
Affinity purification

Storage

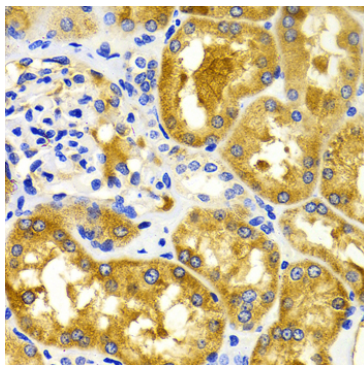
Store at -20°C. Avoid freeze / thaw cycles.

Buffer: PBS with 0.02% sodium azide, 50% glycerol, pH7.3.

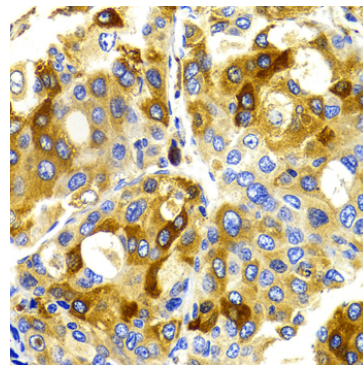
Validation Data



Immunohistochemistry analysis of paraffin-embedded Rat spleen using CDK20 Rabbit pAb (A2686) at dilution of 1:200 (40x lens). Microwave antigen retrieval performed with 0.01M PBS Buffer (pH 7.2) prior to IHC staining.



Immunohistochemistry analysis of paraffin-embedded Human kidney using CDK20 Rabbit pAb (A2686) at dilution of 1:100 (40x lens). Microwave antigen retrieval performed with 0.01M PBS Buffer (pH 7.2) prior to IHC staining.



Immunohistochemistry analysis of paraffin-embedded Human liver cancer using CDK20 Rabbit pAb (A2686) at dilution of 1:100 (40x lens). Microwave antigen retrieval performed with 0.01M PBS Buffer (pH 7.2) prior to IHC staining.