

A2700

Leader in Biomolecular Solutions for Life Science



# CNTFR Rabbit pAb

Catalog No.: A2700

## Basic Information

### Observed MW

41kDa

### Calculated MW

41kDa

### Category

Polyclonal Antibody

### Applications

WB,ELISA

### Cross-Reactivity

Human,Mouse,Rat

## Background

This gene encodes a member of the type 1 cytokine receptor family. The encoded protein is the ligand-specific component of a tripartite receptor for ciliary neurotrophic factor, which plays a critical role in neuronal cell survival, differentiation and gene expression. Binding of ciliary neurotrophic factor to the encoded protein recruits the transmembrane components of the receptor, gp130 and leukemia inhibitory factor receptor, facilitating signal transduction. Single nucleotide polymorphisms in this gene may be associated with variations in muscle strength, as well as early onset of eating disorders. Alternatively spliced transcript variants have been observed for this gene.

## Recommended Dilutions

**WB** 1:400 - 1:2000

**ELISA** Recommended starting concentration is 1 µg/mL. Please optimize the concentration based on your specific assay requirements.

## Immunogen Information

### Gene ID

1271

### Swiss Prot

P26992

### Immunogen

Recombinant protein (or fragment). This information is considered to be commercially sensitive.

### Synonyms

CNTFR

## Contact

 [www.abclonal.com](http://www.abclonal.com)

## Product Information

### Source

Rabbit

### Isotype

IgG

### Purification

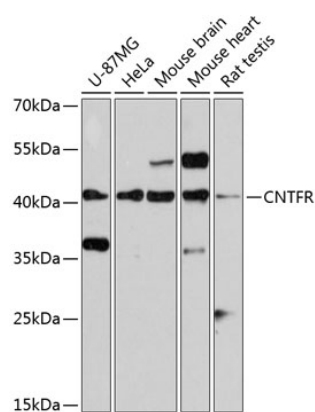
Affinity purification

### Storage

Store at -20°C. Avoid freeze / thaw cycles.

Buffer: PBS with 0.02% sodium azide, 50% glycerol, pH7.3.

## Validation Data



Western blot analysis of various lysates using CNTFR Rabbit pAb (A2700) at 1:3000 dilution.  
Secondary antibody: HRP-conjugated Goat anti-Rabbit IgG (H+L) (AS014) at 1:10000 dilution.  
Lysates/proteins: 25µg per lane.  
Blocking buffer: 3% nonfat dry milk in TBST.  
Detection: ECL Basic Kit (RM00020).  
Exposure time: 10s.