

A2882

Leader in Biomolecular Solutions for Life Science



Cullin 4A Rabbit pAb

Catalog No.: A2882

3 Publications

Basic Information

Observed MW

80kDa

Calculated MW

88kDa

Category

Polyclonal Antibody

Applications

WB,IF/ICC,IP,ELISA

Cross-Reactivity

Human,Mouse,Rat

Background

CUL4A is the ubiquitin ligase component of a multimeric complex involved in the degradation of DNA damage-response proteins (Liu et al., 2009 [PubMed 19481525]).

Recommended Dilutions

WB 1:500 - 1:2000

IF/ICC 1:50 - 1:100

IP 0.5µg-4µg antibody for
200µg-400µg extracts
of whole cells

ELISA Recommended starting
concentration is 1
µg/mL. Please optimize
the concentration
based on your specific
assay requirements.

Immunogen Information

Gene ID

8451

Swiss Prot

Q13619

Immunogen

Synthetic peptide. This information is considered to be commercially sensitive.

Synonyms

CUL4A; cullin-4A; Cullin 4A

Product Information

Source

Rabbit

Isotype

IgG

Purification

Affinity purification

Contact



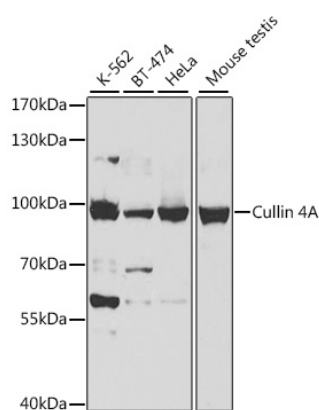
www.abclonal.com

Storage

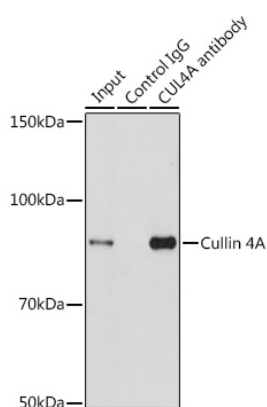
Store at -20°C. Avoid freeze / thaw cycles.

Buffer: PBS with 0.09% Sodium azide,50% glycerol,pH7.3.

Validation Data



Western blot analysis of various lysates using Cullin 4A Rabbit pAb (A2882) at 1:500 dilution.
Secondary antibody: HRP-conjugated Goat anti-Rabbit IgG (H+L) (AS014) at 1:10000 dilution.
Lysates/proteins: 25µg per lane.
Blocking buffer: 3% nonfat dry milk in TBST.
Detection: ECL Basic Kit (RM00020).
Exposure time: 5s.



Immunoprecipitation analysis of 200 µg extracts of HeLa cells using 3 µg Cullin 4A antibody (A2882). Western blot was performed from the immunoprecipitate using Cullin 4A antibody (A2882) at a dilution of 1:1000.