

A2943

Leader in Biomolecular Solutions for Life Science



# CMTM3 Rabbit pAb

Catalog No.: A2943

## Basic Information

### Observed MW

20kDa

### Calculated MW

20kDa

### Category

Polyclonal Antibody

### Applications

WB

### Cross-Reactivity

Human,Mouse

## Background

This gene belongs to the chemokine-like factor gene superfamily, a novel family that is similar to the chemokine and the transmembrane 4 superfamilies of signaling molecules. This gene is one of several chemokine-like factor genes located in a cluster on chromosome 16. Alternatively spliced transcript variants containing different 5' UTRs, but encoding the same protein, have been identified.

## Recommended Dilutions

WB 1:500 - 1:1000

## Immunogen Information

### Gene ID

123920

### Swiss Prot

Q96MX0

### Immunogen

Synthetic peptide. This information is considered to be commercially sensitive.

### Synonyms

BNAS2; CKLFSF3; CMTM3

## Contact



[www.abclonal.com](http://www.abclonal.com)

## Product Information

### Source

Rabbit

### Isotype

IgG

### Purification

Affinity purification

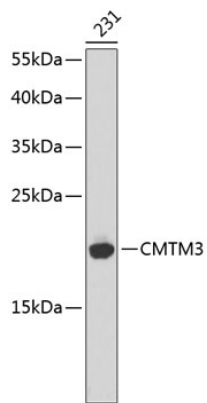
### Storage

Store at -20°C. Avoid freeze / thaw cycles.

Buffer: PBS with 0.02% sodium azide, 50% glycerol, pH7.3.

## Validation Data

---



Western blot analysis of lysates from 231 cells, using CMTM3 Rabbit pAb (A2943).  
Secondary antibody: HRP-conjugated Goat anti-Rabbit IgG (H+L) (AS014) at 1:10000 dilution.  
Lysates/proteins: 25µg per lane.  
Blocking buffer: 3% nonfat dry milk in TBST.