

A2949

Leader in Biomolecular Solutions for Life Science



GJB3 Rabbit pAb

Catalog No.: A2949

Basic Information

Observed MW

31kDa

Calculated MW

31kDa

Category

Polyclonal Antibody

Applications

WB,ELISA

Cross-Reactivity

Human,Mouse,Rat

Background

This gene is a member of the connexin gene family. The encoded protein is a component of gap junctions, which are composed of arrays of intercellular channels that provide a route for the diffusion of low molecular weight materials from cell to cell. Mutations in this gene can cause non-syndromic deafness or erythrokeratoderma variabilis, a skin disorder. Alternative splicing results in multiple transcript variants encoding the same protein.

Recommended Dilutions

WB 1:2000 - 1:50000

ELISA Recommended starting concentration is 1 µg/mL. Please optimize the concentration based on your specific assay requirements.

Immunogen Information

Gene ID
2707

Swiss Prot
O75712

Immunogen

Synthetic peptide. This information is considered to be commercially sensitive.

Synonyms

EKV; CX31; DFNA2; EKVP1; DFNA2B; GJB3

Contact

 www.abclonal.com

Product Information

Source
Rabbit

Isotype
IgG

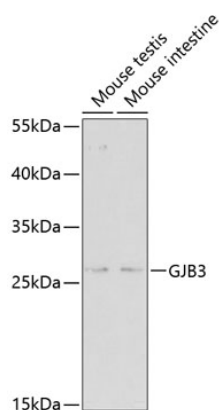
Purification
Affinity purification

Storage

Store at -20°C. Avoid freeze / thaw cycles.

Buffer: PBS with 0.09% Sodium azide,50% glycerol,pH7.3.

Validation Data



Western blot analysis of various lysates using GJB3 Rabbit pAb (A2949) at 1:500 dilution.

Secondary antibody: HRP-conjugated Goat anti-Rabbit IgG (H+L) (AS014) at 1:10000 dilution.

Lysates/proteins: 25µg per lane.

Blocking buffer: 3% nonfat dry milk in TBST.

Detection: ECL Enhanced Kit (RM00021).