

A3102

Leader in Biomolecular Solutions for Life Science



MYSM1 Rabbit pAb

Catalog No.: A3102

Basic Information

Observed MW

105kDa

Calculated MW

95kDa

Category

Polyclonal Antibody

Applications

WB,ELISA

Cross-Reactivity

Human,Mouse,Rat

Background

Enables histone binding activity; peptidase activity; and transcription coactivator activity. Involved in several processes, including chromatin remodeling; monoubiquitinated histone H2A deubiquitination; and positive regulation of transcription by RNA polymerase II. Located in nucleolus and nucleoplasm. Part of protein-containing complex. Implicated in diabetic retinopathy.

Recommended Dilutions

WB 1:500 - 1:2000

ELISA Recommended starting concentration is 1 µg/mL. Please optimize the concentration based on your specific assay requirements.

Immunogen Information

Gene ID

114803

Swiss Prot

Q5VVJ2

Immunogen

Synthetic peptide. This information is considered to be commercially sensitive.

Synonyms

2ADUB; BMFS4; 2A-DUB; MYSM1

Contact



www.abclonal.com

Product Information

Source

Rabbit

Isotype

IgG

Purification

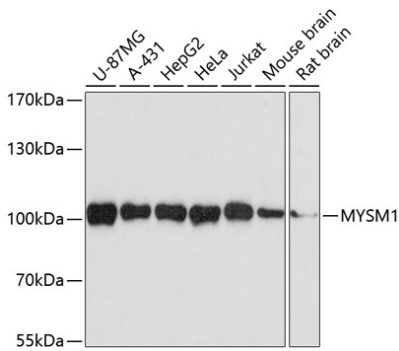
Affinity purification

Storage

Store at -20°C. Avoid freeze / thaw cycles.

Buffer: PBS with 0.01% thimerosal, 50% glycerol, pH7.3.

Validation Data



Western blot analysis of various lysates using MYSM1 Rabbit pAb (A3102) at 1:3000 dilution.
Secondary antibody: HRP-conjugated Goat anti-Rabbit IgG (H+L) (AS014) at 1:10000 dilution.
Lysates/proteins: 25µg per lane.
Blocking buffer: 3% nonfat dry milk in TBST.
Detection: ECL Basic Kit (RM00020).
Exposure time: 90s.