

A3158

Leader in Biomolecular Solutions for Life Science



MonoMethyl-Histone H4-R3 Rabbit pAb

Catalog No.: A3158

Basic Information

Observed MW

13kDa

Calculated MW

11kDa

Category

Polyclonal Antibody

Applications

WB,IHC-P,IF/ICC,ELISA

Cross-Reactivity

Human,Mouse,Rat,Other (Wide Range Predicted)

Background

Histones are basic nuclear proteins that are responsible for the nucleosome structure of the chromosomal fiber in eukaryotes. Two molecules of each of the four core histones (H2A, H2B, H3, and H4) form an octamer, around which approximately 146 bp of DNA is wrapped in repeating units, called nucleosomes. The linker histone, H1, interacts with linker DNA between nucleosomes and functions in the compaction of chromatin into higher order structures. This gene is intronless and encodes a replication-dependent histone that is a member of the histone H4 family. Transcripts from this gene lack polyA tails but instead contain a palindromic termination element. This gene is found in the large histone gene cluster on chromosome 6.

Recommended Dilutions

WB 1:500 - 1:2000

IHC-P 1:50 - 1:200

IF/ICC 1:50 - 1:200

ELISA Recommended starting concentration is 1 µg/mL. Please optimize the concentration based on your specific assay requirements.

Immunogen Information

Gene ID

8359

Swiss Prot

P62805

Immunogen

Synthetic peptide. This information is considered to be commercially sensitive.

Synonyms

H4/I; H4C1; H4C3; H4C4; H4C5; H4C6; H4C8; H4C9; H4FI; H4-16; H4C11; H4C12; H4C13; H4C14; H4C15; H4C16; HIST1H4B; MonoMethyl-Histone H4-R3

Product Information

Source

Rabbit

Isotype

IgG

Purification

Affinity purification

Storage

Store at -20°C. Avoid freeze / thaw cycles.

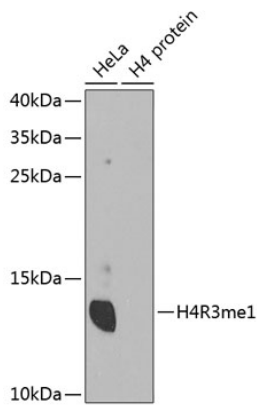
Buffer: PBS with 0.01% thimerosal, 50% glycerol, pH7.3.

Contact



www.abclonal.com

Validation Data

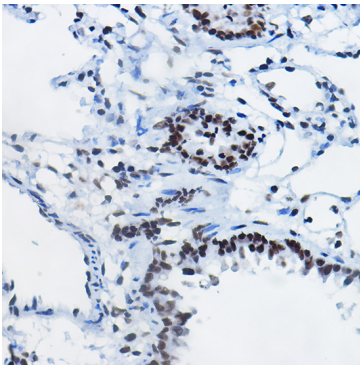


Western blot analysis of various lysates using MonoMethyl-Histone H4-R3 Rabbit pAb (A3158).

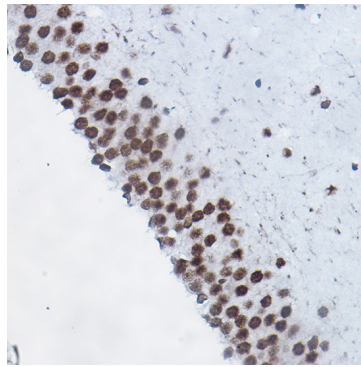
Secondary antibody: HRP-conjugated Goat anti-Rabbit IgG (H+L) (AS014) at 1:10000 dilution.

Lysates/proteins: 25µg per lane.

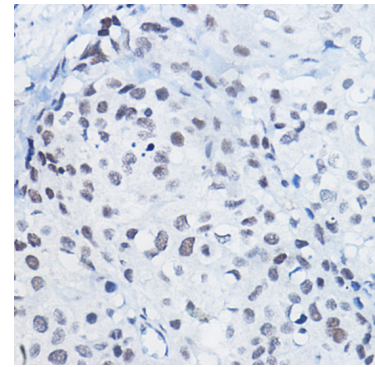
Blocking buffer: 3% nonfat dry milk in TBST.



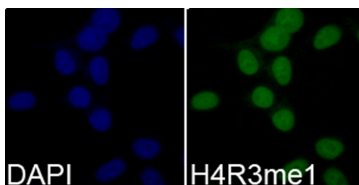
Immunohistochemistry analysis of paraffin-embedded Rat lung using MonoMethyl-Histone H4-R3 Rabbit pAb (A3158) at dilution of 1:100 (40x lens). High pressure antigen retrieval performed with 0.01M Citrate buffer (pH 6.0) prior to IHC staining.



Immunohistochemistry analysis of paraffin-embedded Rat brain using MonoMethyl-Histone H4-R3 Rabbit pAb (A3158) at dilution of 1:100 (40x lens). High pressure antigen retrieval performed with 0.01M Citrate buffer (pH 6.0) prior to IHC staining.



Immunohistochemistry analysis of paraffin-embedded Human breast cancer using MonoMethyl-Histone H4-R3 Rabbit pAb (A3158) at dilution of 1:100 (40x lens). High pressure antigen retrieval performed with 0.01M Citrate buffer (pH 6.0) prior to IHC staining.



Immunofluorescence analysis of 293T cells using MonoMethyl-Histone H4-R3 Rabbit pAb (A3158). Blue: DAPI for nuclear staining.