

A3183

Leader in Biomolecular Solutions for Life Science



PTHLH Rabbit pAb

Catalog No.: A3183

1 Publications

Basic Information

Observed MW

20kDa

Calculated MW

20kDa

Category

Polyclonal Antibody

Applications

WB,IHC-P,ELISA

Cross-Reactivity

Human,Mouse,Rat

Background

The protein encoded by this gene is a member of the parathyroid hormone family. This hormone, via its receptor, PTHR1, regulates endochondral bone development and epithelial-mesenchymal interactions during the formation of the mammary glands and teeth. It is responsible for most cases of humoral hypercalcemia of malignancy, and mutations in this gene are associated with brachydactyly type E2 (BDE2). Alternatively spliced transcript variants have been found for this gene. There is also evidence for alternative translation initiation from non-AUG (CUG and GUG) start sites, downstream of the initiator AUG codon, resulting in nuclear forms of this hormone.

Recommended Dilutions

WB 1:2000 - 1:9000

IHC-P 1:200 - 1:800

ELISA Recommended starting concentration is 1 µg/mL. Please optimize the concentration based on your specific assay requirements.

Immunogen Information

Gene ID

5744

Swiss Prot

P12272

Immunogen

Recombinant protein (or fragment). This information is considered to be commercially sensitive.

Synonyms

HHM; PLP; BDE2; PTHR; PTHRP; PTHLH

Contact

 www.abclonal.com

Product Information

Source

Rabbit

Isotype

IgG

Purification

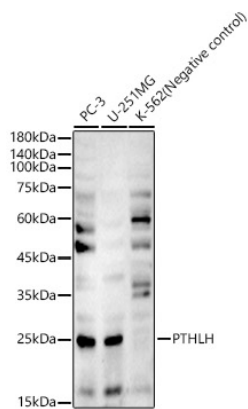
Affinity purification

Storage

Store at -20°C. Avoid freeze / thaw cycles.

Buffer: PBS with 0.05% proclin300,50% glycerol,pH7.3.

Validation Data



Western blot analysis of various lysates, using PTHLH Rabbit pAb (A3183) at 1:8000 dilution.
Secondary antibody: HRP-conjugated Goat anti-Rabbit IgG (H+L) (AS014) at 1:10000 dilution.
Lysates/proteins: 25µg per lane.
Blocking buffer: 3% nonfat dry milk in TBST.
Detection: ECL Basic Kit (RM00020).
Exposure time: 90s.

Immunohistochemistry analysis of tissue using PTHLH Rabbit pAb (A3183) at a dilution of (40x lens). antigen retrieval performed with prior to IHC staining.