

A3256

Leader in Biomolecular Solutions for Life Science



NPLOC4 Rabbit pAb

Catalog No.: A3256

1 Publications

Basic Information

Observed MW

70kDa

Calculated MW

68kDa

Category

Polyclonal Antibody

Applications

WB,IF/ICC,ELISA

Cross-Reactivity

Human,Mouse,Rat

Background

Predicted to enable ATPase binding activity; ubiquitin binding activity; and ubiquitin protein ligase binding activity. Predicted to contribute to K48-linked polyubiquitin modification-dependent protein binding activity and K63-linked polyubiquitin modification-dependent protein binding activity. Involved in negative regulation of RIG-I signaling pathway; negative regulation of type I interferon production; and proteolysis involved in cellular protein catabolic process. Located in nucleus. Part of UFD1-NPL4 complex and VCP-NPL4-UFD1 AAA ATPase complex.

Recommended Dilutions

WB 1:1000 - 1:2000

IF/ICC 1:50 - 1:200

ELISA Recommended starting concentration is 1 µg/mL. Please optimize the concentration based on your specific assay requirements.

Immunogen Information

Gene ID

55666

Swiss Prot

Q8TAT6

Immunogen

Recombinant protein (or fragment). This information is considered to be commercially sensitive.

Synonyms

NPL4; NPLOC4

Contact

 www.abclonal.com

Product Information

Source

Rabbit

Isotype

IgG

Purification

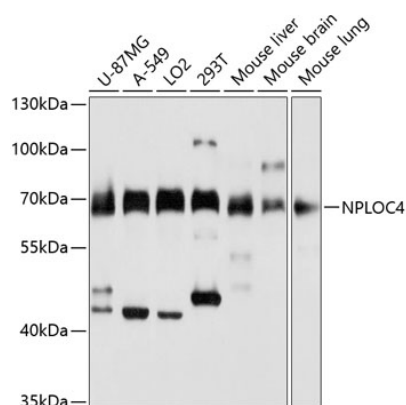
Affinity purification

Storage

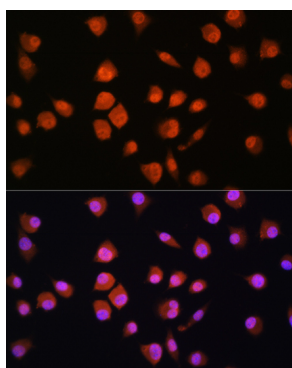
Store at -20°C. Avoid freeze / thaw cycles.

Buffer: PBS with 0.02% sodium azide, 50% glycerol, pH7.3.

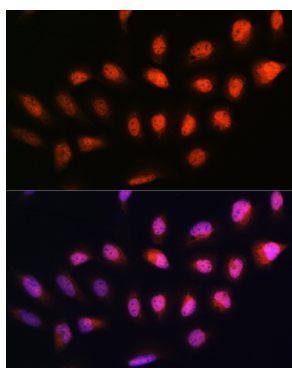
Validation Data



Western blot analysis of various lysates using NPLOC4 Rabbit pAb (A3256) at 1:3000 dilution.
Secondary antibody: HRP-conjugated Goat anti-Rabbit IgG (H+L) (AS014) at 1:10000 dilution.
Lysates/proteins: 25µg per lane.
Blocking buffer: 3% nonfat dry milk in TBST.
Detection: ECL Basic Kit (RM00020).
Exposure time: 10s.



Immunofluorescence analysis of L929 cells using NPLOC4 Rabbit pAb (A3256) at dilution of 1:100.
Secondary antibody: Cy3-conjugated Goat anti-Rabbit IgG (H+L) (AS007) at 1:500 dilution. Blue: DAPI for nuclear staining.



Immunofluorescence analysis of U2OS cells using NPLOC4 Rabbit pAb (A3256) at dilution of 1:100.
Secondary antibody: Cy3-conjugated Goat anti-Rabbit IgG (H+L) (AS007) at 1:500 dilution. Blue: DAPI for nuclear staining.