

A3312

Leader in Biomolecular Solutions for Life Science



## NDUFC2 Rabbit pAb

Catalog No.: A3312

### Basic Information

**Observed MW**

14kDa

**Calculated MW**

14kDa

**Category**

Polyclonal Antibody

**Applications**

WB,ELISA

**Cross-Reactivity**

Human,Mouse,Rat

### Background

Involved in mitochondrial respiratory chain complex I assembly. Located in mitochondrion. Part of mitochondrial respiratory chain complex I. Implicated in nuclear type mitochondrial complex I deficiency.

### Recommended Dilutions

**WB** 1:500 - 1:2000

**ELISA** Recommended starting concentration is 1 µg/mL. Please optimize the concentration based on your specific assay requirements.

### Immunogen Information

**Gene ID**

4718

**Swiss Prot**

O95298

**Immunogen**

Synthetic peptide. This information is considered to be commercially sensitive.

**Synonyms**

HLC-1; B14.5b; MC1DN36; NADHDH2; CI-B14.5b; NDUFC2

### Contact



[www.abclonal.com](http://www.abclonal.com)

### Product Information

**Source**

Rabbit

**Isotype**

IgG

**Purification**

Affinity purification

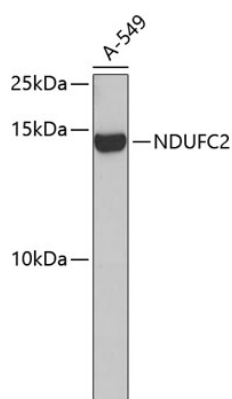
**Storage**

Store at -20°C. Avoid freeze / thaw cycles.

Buffer: PBS with 0.01% thimerosal, 50% glycerol, pH7.3.

## Validation Data

---



Western blot analysis of lysates from A-549 cells, using NDUF2 Rabbit pAb (A3312).  
Secondary antibody: HRP-conjugated Goat anti-Rabbit IgG (H+L) (AS014) at 1:10000 dilution.

Lysates/proteins: 25µg per lane.

Blocking buffer: 3% nonfat dry milk in TBST.