

A3431

Leader in Biomolecular Solutions for Life Science



## eIF3e Rabbit mAb

Catalog No.: A3431

Recombinant

2 Publications

### Basic Information

#### Observed MW

52kDa

#### Calculated MW

52kDa

#### Category

SMab Recombinant Monoclonal  
Antibody

#### Applications

WB,IHC-P,ELISA

#### Cross-Reactivity

Human,Mouse,Rat

#### CloneNo number

ARC1997

### Background

Enables protein N-terminus binding activity. Contributes to translation initiation factor activity. Involved in positive regulation of mRNA binding activity; regulation of gene expression; and translational initiation. Located in cytosol and nucleus. Part of eukaryotic translation initiation factor 3 complex. Colocalizes with PML body.

### Recommended Dilutions

WB 1:500 - 1:2000

IHC-P 1:50 - 1:200

ELISA Recommended starting concentration is 1 µg/mL. Please optimize the concentration based on your specific assay requirements.

### Immunogen Information

#### Gene ID

3646

#### Swiss Prot

P60228

#### Immunogen

Recombinant protein (or fragment). This information is considered to be commercially sensitive.

#### Synonyms

INT6; EIF3S6; EIF3-P48; eIF3-p46; eIF3e

### Contact

 [www.abclonal.com](http://www.abclonal.com)

### Product Information

#### Source

Rabbit

#### Isotype

IgG

#### Purification

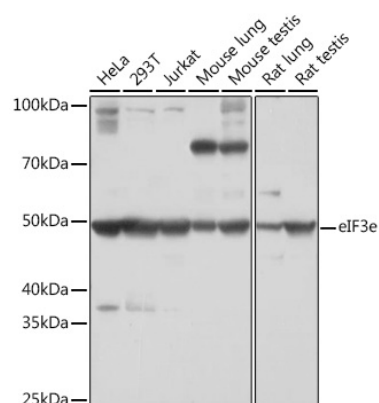
Affinity purification

#### Storage

Store at -20°C. Avoid freeze / thaw cycles.

Buffer: PBS with 0.02% sodium azide, 0.05% BSA, 50% glycerol, pH7.3.

## Validation Data



Western blot analysis of various lysates using eIF3e Rabbit mAb (A3431) at 1:1000 dilution.

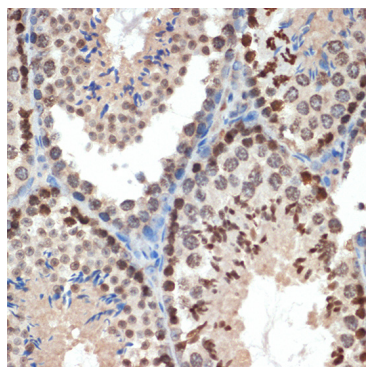
Secondary antibody: HRP-conjugated Goat anti-Rabbit IgG (H+L) (AS014) at 1:10000 dilution.

Lysates/proteins: 25µg per lane.

Blocking buffer: 3% nonfat dry milk in TBST.

Detection: ECL Basic Kit (RM00020).

Exposure time: 30s.



Immunohistochemistry analysis of paraffin-embedded Mouse testis using eIF3e Rabbit mAb (A3431) at dilution of 1:100 (40x lens).

Microwave antigen retrieval performed with 0.01M Tris/EDTA Buffer (pH 9.0) prior to IHC staining.