

A3442

Leader in Biomolecular Solutions for Life Science



TMED9 Rabbit pAb

Catalog No.: A3442

1 Publications

Basic Information

Observed MW

27kDa

Calculated MW

27kDa

Category

Polyclonal Antibody

Applications

WB, ELISA

Cross-Reactivity

Human, Mouse, Rat

Background

This gene is a member of a family of genes encoding transport proteins located in the endoplasmic reticulum and the Golgi. A similar gene in mouse is the target of microRNA miR-296, which is part of an imprinted cluster.

Recommended Dilutions

WB 1:500 - 1:2000

ELISA Recommended starting concentration is 1 µg/mL. Please optimize the concentration based on your specific assay requirements.

Immunogen Information

Gene ID

54732

Swiss Prot

Q9BVK6

Immunogen

Recombinant protein (or fragment). This information is considered to be commercially sensitive.

Synonyms

p25; GMP25; p24a2; HSGP25L2G; p24alpha2; TMED9

Contact



www.abclonal.com

Product Information

Source

Rabbit

Isotype

IgG

Purification

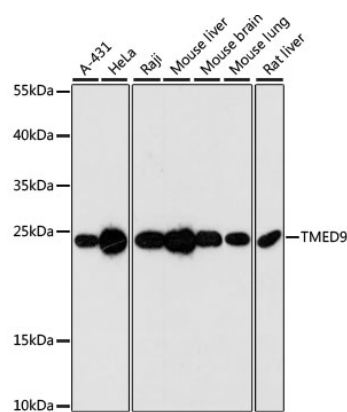
Affinity purification

Storage

Store at -20°C. Avoid freeze / thaw cycles.

Buffer: PBS with 0.01% thimerosal, 50% glycerol, pH7.3.

Validation Data



Western blot analysis of various lysates using TMED9 Rabbit pAb (A3442) at 1:3000 dilution.
Secondary antibody: HRP-conjugated Goat anti-Rabbit IgG (H+L) (AS014) at 1:10000 dilution.
Lysates/proteins: 25µg per lane.
Blocking buffer: 3% nonfat dry milk in TBST.
Detection: ECL Basic Kit (RM00020).
Exposure time: 90s.