

A3658

Leader in Biomolecular Solutions for Life Science



SLC3A2/CD98hc Rabbit mAb

Catalog No.: A3658

Recombinant

6 Publications

Basic Information

Observed MW

90kDa

Calculated MW

58kDa

Category

SMab Recombinant Monoclonal
Antibody

Applications

WB,ELISA

Cross-Reactivity

Human

CloneNo number

ARC0816

Background

This gene is a member of the solute carrier family and encodes a cell surface, transmembrane protein. The protein exists as the heavy chain of a heterodimer, covalently bound through di-sulfide bonds to one of several possible light chains. The encoded transporter plays a role in regulation of intracellular calcium levels and transports L-type amino acids. Alternatively spliced transcript variants, encoding different isoforms, have been characterized.

Recommended Dilutions

WB 1:500 - 1:1000

Immunogen Information

Gene ID

6520

Swiss Prot

P08195

Immunogen

Synthetic peptide. This information is considered to be commercially sensitive.

Synonyms

4F2; CD98; MDU1; 4F2HC; 4T2HC; NACAE; CD98HC; SLC3A2/CD98hc

Contact



www.abclonal.com

Product Information

Source

Rabbit

Isotype

IgG

Purification

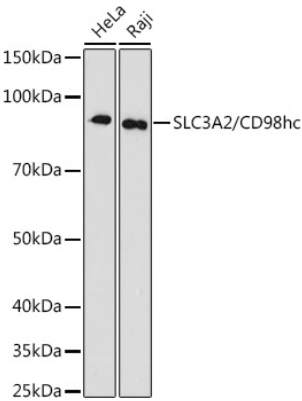
Affinity purification

Storage

Store at -20°C. Avoid freeze / thaw cycles.

Buffer: PBS with 0.02% sodium azide,0.05% BSA,50% glycerol,pH7.3.

Validation Data



Western blot analysis of various lysates using SLC3A2/CD98hc Rabbit mAb (A3658) at 1:1000 dilution.
Secondary antibody: HRP-conjugated Goat anti-Rabbit IgG (H+L) (AS014) at 1:10000 dilution.
Lysates/proteins: 25µg per lane.
Blocking buffer: 3% nonfat dry milk in TBST.
Detection: ECL Basic Kit (RM00020).
Exposure time: 180s.