

A3673

Leader in Biomolecular Solutions for Life Science



## mGluR2 Rabbit mAb

Catalog No.: A3673

Recombinant

### Basic Information

#### Observed MW

100kDa及以上

#### Calculated MW

96kDa

#### Category

SMab Recombinant Monoclonal  
Antibody

#### Applications

WB,IF/ICC,ELISA

#### Cross-Reactivity

Mouse,Rat

#### CloneNo number

ARC2070

### Recommended Dilutions

WB 1:500 - 1:1000

IF/ICC 1:50 - 1:200

ELISA Recommended starting  
concentration is 1  
μg/mL. Please optimize  
the concentration  
based on your specific  
assay requirements.

### Contact

 [www.abclonal.com](http://www.abclonal.com)

### Background

L-glutamate is the major excitatory neurotransmitter in the central nervous system and activates both ionotropic and metabotropic glutamate receptors. Glutamatergic neurotransmission is involved in most aspects of normal brain function and can be perturbed in many neuropathologic conditions. The metabotropic glutamate receptors are a family of G protein-coupled receptors, that have been divided into 3 groups on the basis of sequence homology, putative signal transduction mechanisms, and pharmacologic properties. Group I includes GRM1 and GRM5 and these receptors have been shown to activate phospholipase C. Group II includes GRM2 and GRM3 while Group III includes GRM4, GRM6, GRM7 and GRM8. Group II and III receptors are linked to the inhibition of the cyclic AMP cascade but differ in their agonist selectivities. Several transcript variants encoding different isoforms have been found for this gene.

### Immunogen Information

#### Gene ID

2912

#### Swiss Prot

Q14416

#### Immunogen

Synthetic peptide. This information is considered to be commercially sensitive.

#### Synonyms

GLUR2; mGluR2

### Product Information

#### Source

Rabbit

#### Isotype

IgG

#### Purification

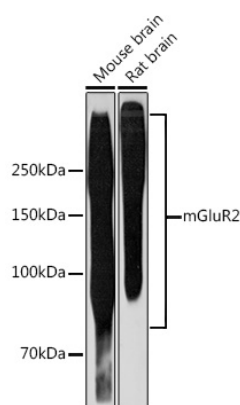
Affinity purification

#### Storage

Store at -20°C. Avoid freeze / thaw cycles.

Buffer: PBS with 0.02% sodium azide,0.05% BSA,50% glycerol,pH7.3.

## Validation Data



Western blot analysis of various lysates using mGluR2 Rabbit mAb (A3673) at 1:1000 dilution.

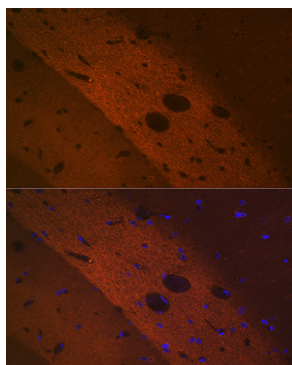
Secondary antibody: HRP-conjugated Goat anti-Rabbit IgG (H+L) (AS014) at 1:10000 dilution.

Lysates/proteins: 25µg per lane.

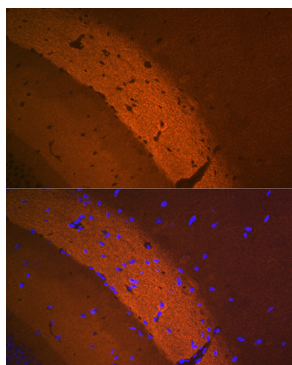
Blocking buffer: 3% nonfat dry milk in TBST.

Detection: ECL Basic Kit (RM00020).

Exposure time: 3min.



Immunofluorescence analysis of paraffin-embedded rat brain using mGluR2 Rabbit mAb (A3673) at dilution of 1:100 (40x lens). Secondary antibody: Cy3-conjugated Goat anti-Rabbit IgG (H+L) (AS007) at 1:500 dilution. Blue: DAPI for nuclear staining.



Immunofluorescence analysis of paraffin-embedded mouse brain using mGluR2 Rabbit mAb (A3673) at dilution of 1:100 (40x lens). Secondary antibody: Cy3-conjugated Goat anti-Rabbit IgG (H+L) (AS007) at 1:500 dilution. Blue: DAPI for nuclear staining.