

A3739

Leader in Biomolecular Solutions for Life Science



# ARHGAP1 Rabbit pAb

Catalog No.: A3739

## Basic Information

### Observed MW

50kDa

### Calculated MW

50kDa

### Category

Polyclonal Antibody

### Applications

WB,IP,ELISA

### Cross-Reactivity

Human,Mouse,Rat

## Background

This gene encodes a member of a large family of proteins that activate Rho-type guanosine triphosphate (GTP) metabolizing enzymes. The encoded protein contains a SRC homology 3 domain and interacts with Bcl-2-associated protein family members.

## Recommended Dilutions

<b>WB</b>	1:500 - 1:2000
<b>IP</b>	0.5µg-4µg antibody for 200µg-400µg extracts of whole cells
<b>ELISA</b>	Recommended starting concentration is 1 µg/mL. Please optimize the concentration based on your specific assay requirements.

## Contact



[www.abclonal.com](http://www.abclonal.com)

## Immunogen Information

### Gene ID

392

### Swiss Prot

Q07960

### Immunogen

Recombinant protein (or fragment). This information is considered to be commercially sensitive.

### Synonyms

RHOGAP; RHOGAP1; CDC42GAP; p50rhoGAP; ARHGAP1

## Product Information

### Source

Rabbit

### Isotype

IgG

### Purification

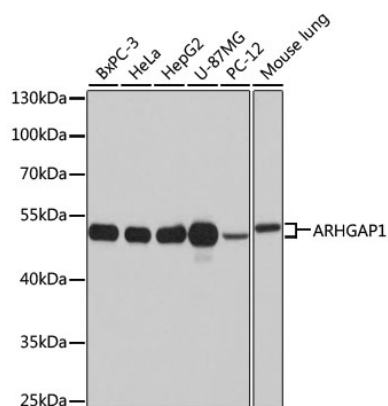
Affinity purification

### Storage

Store at -20°C. Avoid freeze / thaw cycles.

Buffer: PBS with 0.02% sodium azide, 50% glycerol, pH7.3.

## Validation Data



Western blot analysis of various lysates using ARHGAP1 Rabbit pAb (A3739) at 1:1000 dilution.

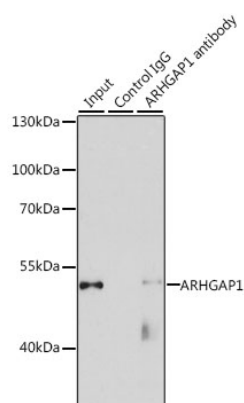
Secondary antibody: HRP-conjugated Goat anti-Rabbit IgG (H+L) (AS014) at 1:10000 dilution.

Lysates/proteins: 25µg per lane.

Blocking buffer: 3% nonfat dry milk in TBST.

Detection: ECL Basic Kit (RM00020).

Exposure time: 15s.



Immunoprecipitation analysis of 200 µg extracts of HeLa cells, using 3 µg ARHGAP1 antibody (A3739). Western blot was performed from the immunoprecipitate using ARHGAP1 antibody (A3739) at a dilution of 1:1000.