

A3887

Leader in Biomolecular Solutions for Life Science



# TCP1 alpha Rabbit mAb

Catalog No.: A3887

Recombinant

## Basic Information

### Observed MW

60kDa

### Calculated MW

60kDa

### Category

SMab Recombinant Monoclonal  
Antibody

### Applications

WB,IHC-P,ELISA

### Cross-Reactivity

Human

### CloneNo number

ARC0859

## Recommended Dilutions

WB 1:500 - 1:1000

IHC-P 1:50 - 1:200

ELISA Recommended starting  
concentration is 1  
µg/mL. Please optimize  
the concentration  
based on your specific  
assay requirements.

## Contact



[www.abclonal.com](http://www.abclonal.com)

## Background

The protein encoded by this gene is a molecular chaperone that is a member of the chaperonin containing TCP1 complex (CCT), also known as the TCP1 ring complex (TRiC). This complex consists of two identical stacked rings, each containing eight different proteins. Unfolded polypeptides enter the central cavity of the complex and are folded in an ATP-dependent manner. The complex folds various proteins, including actin and tubulin. Alternate transcriptional splice variants of this gene, encoding different isoforms, have been characterized. In addition, three pseudogenes that appear to be derived from this gene have been found.

## Immunogen Information

### Gene ID

6950

### Swiss Prot

P17987

### Immunogen

Synthetic peptide. This information is considered to be commercially sensitive.

### Synonyms

CCT1; CCTa; D6S230E; CCT-alpha; TCP-1-alpha; TCP1 alpha

## Product Information

### Source

Rabbit

### Isotype

IgG

### Purification

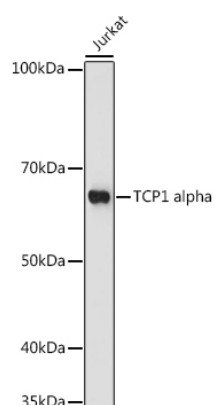
Affinity purification

### Storage

Store at -20°C. Avoid freeze / thaw cycles.

Buffer: PBS with 0.02% sodium azide,0.05% BSA,50% glycerol,pH7.3.

## Validation Data



Western blot analysis of lysates from Jurkat cells, using TCP1 alpha Rabbit mAb (A3887) at 1:1000 dilution.

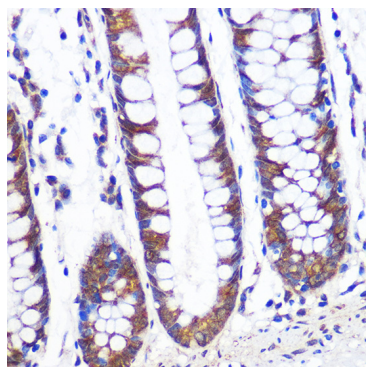
Secondary antibody: HRP-conjugated Goat anti-Rabbit IgG (H+L) (AS014) at 1:10000 dilution.

Lysates/proteins: 25µg per lane.

Blocking buffer: 3% nonfat dry milk in TBST.

Detection: ECL Basic Kit (RM00020).

Exposure time: 180s.



Immunohistochemistry analysis of paraffin-embedded Human colon using TCP1 alpha Rabbit mAb (A3887) at dilution of 1:100 (40x lens). Microwave antigen retrieval performed with 0.01M PBS Buffer (pH 7.2) prior to IHC staining.