

A3924

Leader in Biomolecular Solutions for Life Science



# IFIT3 Rabbit pAb

Catalog No.: A3924

5 Publications

## Basic Information

### Observed MW

60kDa

### Calculated MW

56kDa

### Category

Polyclonal Antibody

### Applications

WB,IHC-P,ELISA

### Cross-Reactivity

Human,Mouse,Rat

## Background

Predicted to enable RNA binding activity and identical protein binding activity. Acts upstream of or within cellular response to interferon-beta; response to bacterium; and response to stilbenoid. Predicted to be located in mitochondrion. Predicted to be active in cytosol. Is expressed in alimentary system; eye; face; and nervous system. Orthologous to human IFIT3 (interferon induced protein with tetratricopeptide repeats 3).

## Recommended Dilutions

WB 1:500 - 1:1000

IHC-P 1:100 - 1:200

ELISA Recommended starting concentration is 1 µg/mL. Please optimize the concentration based on your specific assay requirements.

## Immunogen Information

### Gene ID

15959

### Swiss Prot

O14879

### Immunogen

Recombinant protein (or fragment). This information is considered to be commercially sensitive.

### Synonyms

P49; Ifi49; IFIT3

## Contact

 [www.abclonal.com](http://www.abclonal.com)

## Product Information

### Source

Rabbit

### Isotype

IgG

### Purification

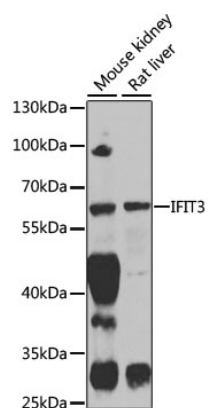
Affinity purification

### Storage

Store at -20°C. Avoid freeze / thaw cycles.

Buffer: PBS with 0.02% sodium azide, 50% glycerol, pH7.3.

## Validation Data



Western blot analysis of various lysates using IFIT3 Rabbit pAb (A3924) at 1:1000 dilution.

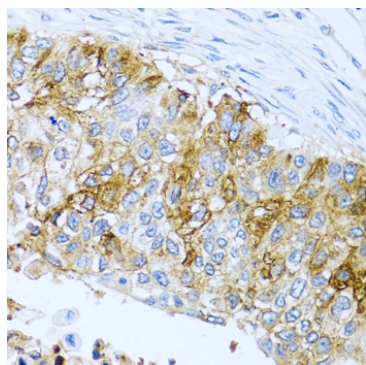
Secondary antibody: HRP-conjugated Goat anti-Rabbit IgG (H+L) (AS014) at 1:10000 dilution.

Lysates/proteins: 25µg per lane.

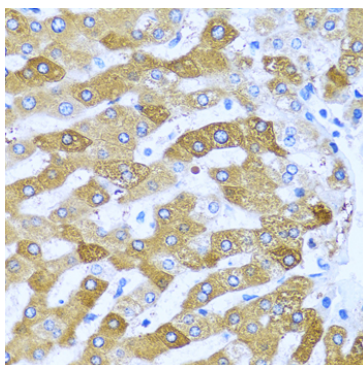
Blocking buffer: 3% nonfat dry milk in TBST.

Detection: ECL Enhanced Kit (RM00021).

Exposure time: 60s.



Immunohistochemistry analysis of paraffin-embedded Human lung cancer using IFIT3 Rabbit pAb (A3924) at dilution of 1:100 (40x lens). Microwave antigen retrieval performed with 0.01M PBS Buffer (pH 7.2) prior to IHC staining.



Immunohistochemistry analysis of paraffin-embedded Human liver using IFIT3 Rabbit pAb (A3924) at dilution of 1:100 (40x lens). Microwave antigen retrieval performed with 0.01M PBS Buffer (pH 7.2) prior to IHC staining.