

A4016

Leader in Biomolecular Solutions for Life Science



## TRPC1 Rabbit mAb

Catalog No.: A4016

Recombinant

2 Publications

### Basic Information

#### Observed MW

130kDa

#### Calculated MW

88kDa/91kDa

#### Category

SMab Recombinant Monoclonal  
Antibody

#### Applications

WB, ELISA

#### Cross-Reactivity

Human, Mouse, Rat

#### CloneNo number

ARC0884

### Background

The protein encoded by this gene is a membrane protein that can form a non-selective channel permeable to calcium and other cations. The encoded protein appears to be induced to form channels by a receptor tyrosine kinase-activated phosphatidylinositol second messenger system and also by depletion of intracellular calcium stores. Two transcript variants encoding different isoforms have been found for this gene.

### Recommended Dilutions

**WB** 1:500 - 1:2000

**ELISA** Recommended starting concentration is 1 µg/mL. Please optimize the concentration based on your specific assay requirements.

### Immunogen Information

#### Gene ID

7220

#### Swiss Prot

P48995

#### Immunogen

Synthetic peptide. This information is considered to be commercially sensitive.

#### Synonyms

TRP1; HTRP-1; TRPC1

### Contact



[www.abclonal.com](http://www.abclonal.com)

### Product Information

#### Source

Rabbit

#### Isotype

IgG

#### Purification

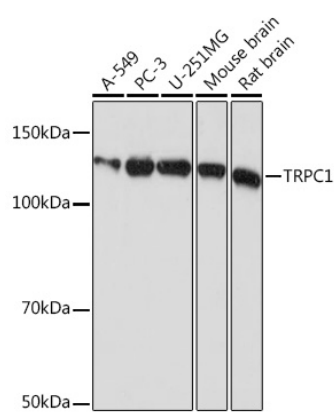
Affinity purification

#### Storage

Store at -20°C. Avoid freeze / thaw cycles.

Buffer: PBS with 0.02% sodium azide, 0.05% BSA, 50% glycerol, pH7.3.

# Validation Data



Western blot analysis of various lysates using TRPC1 Rabbit mAb (A4016) at 1:1000 dilution.  
Secondary antibody: HRP-conjugated Goat anti-Rabbit IgG (H+L) (AS014) at 1:10000 dilution.  
Lysates/proteins: 25µg per lane.  
Blocking buffer: 3% nonfat dry milk in TBST.  
Detection: ECL Basic Kit (RM00020).  
Exposure time: 5s.