

A4064

Leader in Biomolecular Solutions for Life Science



SMMHC/MYH11 Rabbit mAb

Catalog No.: A4064

Recombinant

8 Publications

Basic Information

Observed MW

250kDa

Calculated MW

227kDa

Category

SMab Recombinant Monoclonal
Antibody

Applications

WB,IHC-P,IF/ICC,ELISA

Cross-Reactivity

Human,Mouse,Rat

CloneNo number

ARC51911

Background

The protein encoded by this gene is a smooth muscle myosin belonging to the myosin heavy chain family. The gene product is a subunit of a hexameric protein that consists of two heavy chain subunits and two pairs of non-identical light chain subunits. It functions as a major contractile protein, converting chemical energy into mechanical energy through the hydrolysis of ATP. A chromosomal rearrangement involving this gene is associated with acute myeloid leukemia of the M4Eo subtype. Mutations in this gene are associated with visceral myopathy, megacystis-microcolon-intestinal hypoperistalsis syndrome 2, and familial thoracic aortic aneurysm 4.

Recommended Dilutions

WB 1:500 - 1:1000

IHC-P 1:500 - 1:5000

IF/ICC 1:400 - 1:1600

ELISA Recommended starting concentration is 1 µg/mL. Please optimize the concentration based on your specific assay requirements.

Immunogen Information

Gene ID

4629

Swiss Prot

P35749

Immunogen

Recombinant protein (or fragment). This information is considered to be commercially sensitive.

Synonyms

AAT4; FAA4; SMHC; SMMHC; VSCM2; SMMS-1; SMMHC/MYH11

Product Information

Source

Rabbit

Isotype

IgG

Purification

Affinity purification

Storage

Store at -20°C. Avoid freeze / thaw cycles.

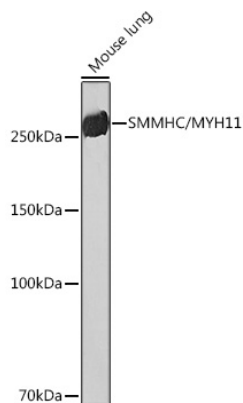
Buffer: PBS containing 50% glycerol and 0.05% BSA, preserved with proclin300 or sodium azide (as specified on the Certificate of Analysis), pH 7.3.

Contact

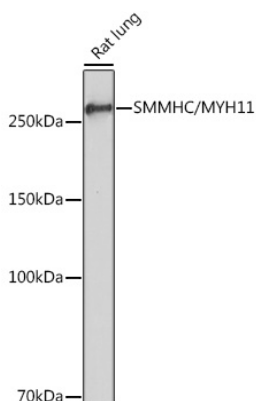


www.abclonal.com

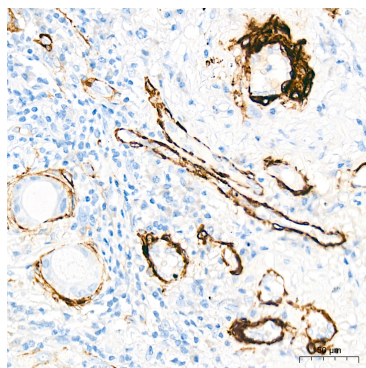
Validation Data



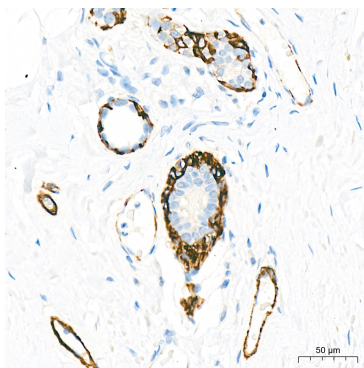
Western blot analysis of lysates from Mouse lung, using SMMHC/SMMHC/MYH11 Rabbit mAb (A4064) at 1:1000 dilution.
Secondary antibody: HRP-conjugated Goat anti-Rabbit IgG (H+L) (AS014) at 1:10000 dilution.
Lysates/proteins: 25µg per lane.
Blocking buffer: 3% nonfat dry milk in TBST.
Detection: ECL Basic Kit (RM00020).
Exposure time: 3min.



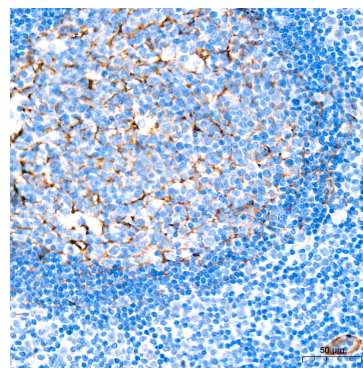
Western blot analysis of lysates from Rat lung, using SMMHC/SMMHC/MYH11 Rabbit mAb (A4064) at 1:1000 dilution.
Secondary antibody: HRP-conjugated Goat anti-Rabbit IgG (H+L) (AS014) at 1:10000 dilution.
Lysates/proteins: 25µg per lane.
Blocking buffer: 3% nonfat dry milk in TBST.
Detection: ECL Enhanced Kit (RM00021).
Exposure time: 3min.



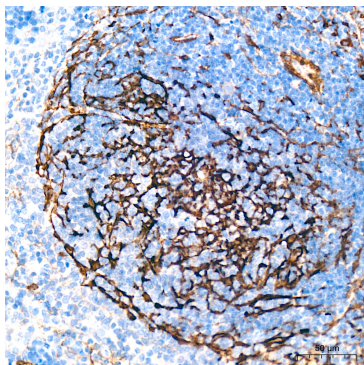
Immunohistochemistry analysis of paraffin-embedded Human lung tissue using SMMHC/MYH11 Rabbit mAb (A4064) at a dilution of 1:1000 (40x lens). High pressure antigen retrieval performed with 0.01M Citrate Buffer (pH 6.0) prior to IHC staining.



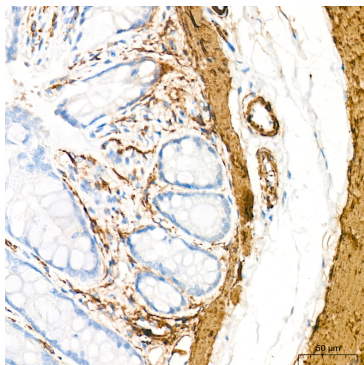
Immunohistochemistry analysis of paraffin-embedded Human breast tissue using SMMHC/MYH11 Rabbit mAb (A4064) at a dilution of 1:1000 (40x lens). High pressure antigen retrieval performed with 0.01M Citrate Buffer (pH 6.0) prior to IHC staining.



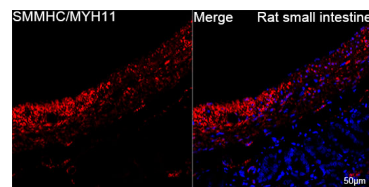
Immunohistochemistry analysis of paraffin-embedded Human tonsil tissue using SMMHC/MYH11 Rabbit mAb (A4064) at a dilution of 1:1000 (40x lens). High pressure antigen retrieval performed with 0.01M Citrate Buffer (pH 6.0) prior to IHC staining.



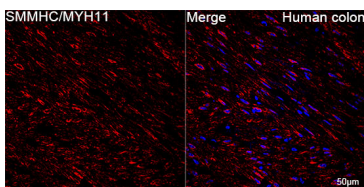
Immunohistochemistry analysis of paraffin-embedded Mouse spleen tissue using SMMHC/MYH11 Rabbit mAb (A4064) at a dilution of 1:1000 (40x lens). High pressure antigen retrieval performed with 0.01M Citrate Buffer (pH 6.0) prior to IHC staining.



Immunohistochemistry analysis of paraffin-embedded Rat colon tissue using SMMHC/MYH11 Rabbit mAb (A4064) at a dilution of 1:1000 (40x lens). High pressure antigen retrieval performed with 0.01M Citrate Buffer (pH 6.0) prior to IHC staining.



Confocal imaging of paraffin-embedded Rat small intestine using SMMHC/MYH11 Rabbit mAb (A4064, dilution 1:800) followed by a further incubation with Cy3 Goat Anti-Rabbit IgG (H+L) (AS007, dilution 1:500) (Red). DAPI was used for nuclear staining (Blue). Objective: 40x. Perform high pressure antigen retrieval with 0.01 M citRate buffer (pH 6.0) prior to IF staining.



Confocal imaging of paraffin-embedded Human colon using SMMHC/MYH11 Rabbit mAb (A4064, dilution 1:800) followed by a further incubation with Cy3 Goat Anti-Rabbit IgG (H+L) (AS007, dilution 1:500) (Red). DAPI was used for nuclear staining (Blue). Objective: 40x. Perform high pressure antigen retrieval with 0.01 M citRate buffer (pH 6.0) prior to IF staining.