

A4121

Leader in Biomolecular Solutions for Life Science



Prolactin Receptor Rabbit mAb

Catalog No.: A4121

Recombinant

Basic Information

Observed MW

95kDa

Calculated MW

70kDa

Category

SMab Recombinant Monoclonal
Antibody

Applications

WB,ELISA

Cross-Reactivity

Human,Mouse,Rat

CloneNo number

ARC2123

Background

This gene encodes a receptor for the anterior pituitary hormone, prolactin, and belongs to the type I cytokine receptor family. Prolactin-dependent signaling occurs as the result of ligand-induced dimerization of the prolactin receptor. Several alternatively spliced transcript variants encoding different membrane-bound and soluble isoforms have been described for this gene, which may function to modulate the endocrine and autocrine effects of prolactin in normal tissue and cancer.

Recommended Dilutions

WB 1:500 - 1:1000

ELISA Recommended starting concentration is 1 µg/mL. Please optimize the concentration based on your specific assay requirements.

Immunogen Information

Gene ID

5618

Swiss Prot

P16471

Immunogen

Synthetic peptide. This information is considered to be commercially sensitive.

Synonyms

HPRL; MFAB; hPRLr1; RI-PRLR; Prolactin Receptor

Contact



www.abclonal.com

Product Information

Source

Rabbit

Isotype

IgG

Purification

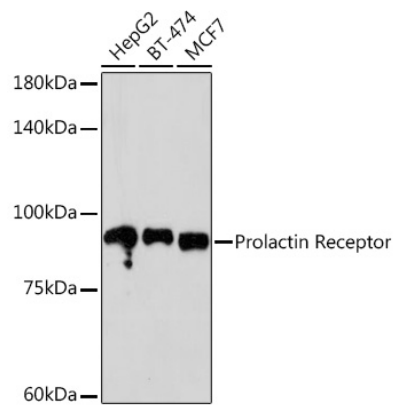
Affinity purification

Storage

Store at -20°C. Avoid freeze / thaw cycles.

Buffer: PBS with 0.02% sodium azide,0.05% BSA,50% glycerol,pH7.3.

Validation Data



Western blot analysis of various lysates using Prolactin Receptor Rabbit mAb (A4121) at 1:500 dilution.
Secondary antibody: HRP-conjugated Goat anti-Rabbit IgG (H+L) (AS014) at 1:10000 dilution.
Lysates/proteins: 25µg per lane.
Blocking buffer: 3% nonfat dry milk in TBST.
Detection: ECL Basic Kit (RM00020).
Exposure time: 90s.