

A4137

Leader in Biomolecular Solutions for Life Science



GLUT3/SLC2A3 Rabbit mAb

Catalog No.: A4137

Recombinant

2 Publications

Basic Information

Observed MW

48-60kDa

Calculated MW

54kDa

Category

SMab Recombinant Monoclonal
Antibody

Applications

WB,IP,ELISA

Cross-Reactivity

Human,Mouse,Rat

CloneNo number

ARC0917

Background

Enables dehydroascorbic acid transmembrane transporter activity; glucose binding activity; and glucose transmembrane transporter activity. Involved in glucose import across plasma membrane and transport across blood-brain barrier. Is integral component of plasma membrane. Biomarker of Alzheimer's disease; acanthosis nigricans; diabetes mellitus; and type 2 diabetes mellitus.

Recommended Dilutions

WB 1:1000 - 1:4000

IP 0.5µg-4µg antibody for
400µg-600µg extracts
of whole cells

ELISA Recommended starting
concentration is 1
µg/mL. Please optimize
the concentration
based on your specific
assay requirements.

Immunogen Information

Gene ID

6515

Swiss Prot

P11169

Immunogen

Synthetic peptide. This information is considered to be commercially sensitive.

Synonyms

GLUT3; GLUT3/SLC2A3

Product Information

Source

Rabbit

Isotype

IgG

Purification

Affinity purification

Storage

Store at -20°C. Avoid freeze / thaw cycles.

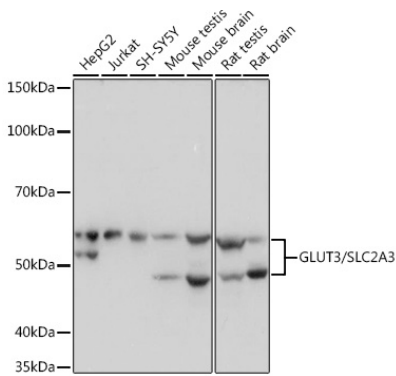
Buffer: PBS with 0.02% sodium azide,0.05% BSA,50% glycerol,pH7.3.

Contact

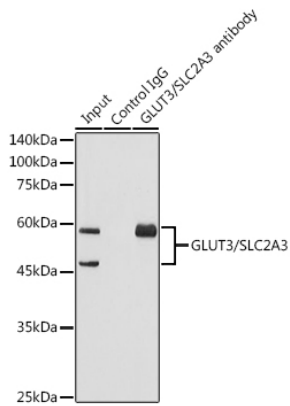


www.abclonal.com

Validation Data



Western blot analysis of various lysates using GLUT3/SLC2A3 Rabbit mAb (A4137) at 1:1000 dilution.
Secondary antibody: HRP-conjugated Goat anti-Rabbit IgG (H+L) (AS014) at 1:10000 dilution.
Lysates/proteins: 25µg per lane.
Blocking buffer: 3% nonfat dry milk in TBST.
Detection: ECL Basic Kit (RM00020).
Exposure time: 1s.



Immunoprecipitation analysis of 600 µg extracts of Mouse brain using 3 µg GLUT3/SLC2A3 antibody (A4137). Western blot was performed from the immunoprecipitate using GLUT3/SLC2A3 antibody (A4137) at a dilution of 1:1000.