

A4195

Leader in Biomolecular Solutions for Life Science



Aquaporin-1 (AQP1) Rabbit mAb

Catalog No.: A4195

Recombinant

3 Publications

Basic Information

Observed MW

29kDa

Calculated MW

29kDa

Category

SMab Recombinant Monoclonal
Antibody

Applications

WB,IHC-P,IF/ICC,ELISA

Cross-Reactivity

Human,Mouse,Rat

CloneNo number

ARC0925

Background

This gene encodes a small integral membrane protein with six bilayer spanning domains that functions as a water channel protein. This protein permits passive transport of water along an osmotic gradient. This gene is a possible candidate for disorders involving imbalance in ocular fluid movement.

Recommended Dilutions

WB 1:1000 - 1:6000

IHC-P 1:500 - 1:2000

IF/ICC 1:100 - 1:1000

ELISA Recommended starting concentration is 1 µg/mL. Please optimize the concentration based on your specific assay requirements.

Immunogen Information

Gene ID

358

Swiss Prot

P29972

Immunogen

Synthetic peptide. This information is considered to be commercially sensitive.

Synonyms

CO; CHIP28; AQP-CHIP; Aquaporin-1 (AQP1)

Product Information

Source

Rabbit

Isotype

IgG

Purification

Affinity purification

Storage

Store at -20°C. Avoid freeze / thaw cycles.

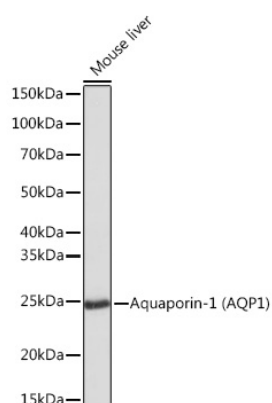
Buffer: PBS with 0.02% sodium azide,0.05% BSA,50% glycerol,pH7.3.

Contact

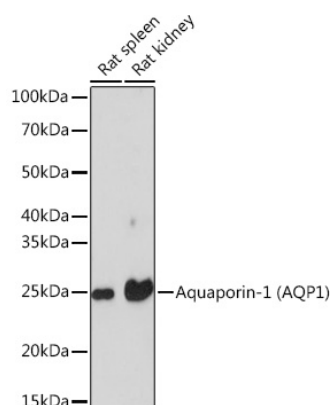


www.abclonal.com

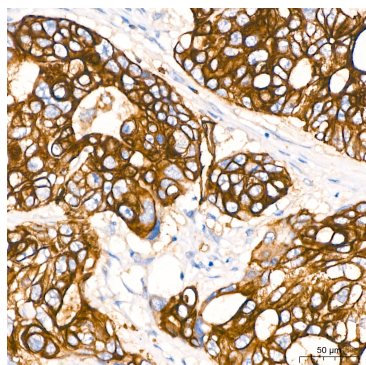
Validation Data



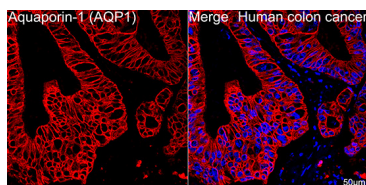
Western blot analysis of lysates from Mouse liver, using Aquaporin-1 (Aquaporin-1 (AQP1)) Rabbit mAb (A4195) at 1:1000 dilution.
 Secondary antibody: HRP-conjugated Goat anti-Rabbit IgG (H+L) (AS014) at 1:10000 dilution.
 Lysates/proteins: 25µg per lane.
 Blocking buffer: 3% nonfat dry milk in TBST.
 Detection: ECL Basic Kit (RM00020).
 Exposure time: 1s.



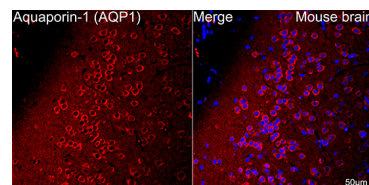
Western blot analysis of various lysates using Aquaporin-1 (Aquaporin-1 (AQP1)) Rabbit mAb (A4195) at 1:1000 dilution.
 Secondary antibody: HRP-conjugated Goat anti-Rabbit IgG (H+L) (AS014) at 1:10000 dilution.
 Lysates/proteins: 25µg per lane.
 Blocking buffer: 3% nonfat dry milk in TBST.
 Detection: ECL Basic Kit (RM00020).
 Exposure time: 10s.



Immunohistochemistry analysis of paraffin-embedded Human colon carcinoma tissue using Aquaporin-1 (AQP1) Rabbit mAb (A4195) at a dilution of 1:1000 (40x lens). High pressure antigen retrieval performed with 0.01M Citrate Buffer (pH 6.0) prior to IHC staining.

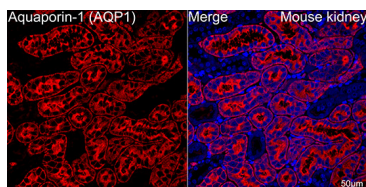


Confocal imaging of paraffin-embedded Human colon cancer tissue using Aquaporin-1 (AQP1) Rabbit mAb (A4195, dilution 1:100) followed by a further incubation with Cy3 Goat Anti-Rabbit IgG (H+L) (AS007, dilution 1:500) (Red). DAPI was used for nuclear staining (Blue). High pressure antigen retrieval performed with 0.01M Citrate Buffer (pH 6.0) prior to IF staining. Objective: 40x.



Confocal imaging of paraffin-embedded Mouse brain tissue using Aquaporin-1 (AQP1) Rabbit mAb (A4195, dilution 1:100) followed by a further incubation with Cy3 Goat Anti-Rabbit IgG (H+L) (AS007, dilution 1:500) (Red). DAPI was used for nuclear staining (Blue). Microwave antigen retrieval performed with 0.01M Citrate Buffer (pH 6.0) prior to IF staining. Objective: 40x.

Validation Data



Confocal imaging of paraffin-embedded Mouse kidney tissue using Aquaporin-1 (AQP1) Rabbit mAb (A4195, dilution 1:100) followed by a further incubation with Cy3 Goat Anti-Rabbit IgG (H+L) (AS007, dilution 1:500) (Red). DAPI was used for nuclear staining (Blue). Microwave antigen retrieval performed with 0.01M Citrate Buffer (pH 6.0) prior to IF staining. Objective: 40x.