

A4222

Leader in Biomolecular Solutions for Life Science



MRE11 Rabbit mAb

Catalog No.: A4222

Recombinant

1 Publications

Basic Information

Observed MW

81kDa

Calculated MW

81kDa

Category

SMab Recombinant Monoclonal
Antibody

Applications

WB,ChIP,ELISA

Cross-Reactivity

Human,Mouse

CloneNo number

ARC0931

Background

This gene encodes a nuclear protein involved in homologous recombination, telomere length maintenance, and DNA double-strand break repair. By itself, the protein has 3' to 5' exonuclease activity and endonuclease activity. The protein forms a complex with the RAD50 homolog; this complex is required for nonhomologous joining of DNA ends and possesses increased single-stranded DNA endonuclease and 3' to 5' exonuclease activities. In conjunction with a DNA ligase, this protein promotes the joining of noncomplementary ends in vitro using short homologies near the ends of the DNA fragments. This gene has a pseudogene on chromosome 3. Alternative splicing of this gene results in two transcript variants encoding different isoforms.

Recommended Dilutions

WB 1:500 - 1:2000

ELISA Recommended starting concentration is 1 µg/mL. Please optimize the concentration based on your specific assay requirements.

ChIP 5µg antibody for 10µg-15µg of Chromatin

Contact



www.abclonal.com

Immunogen Information

Gene ID

4361

Swiss Prot

P49959

Immunogen

Synthetic peptide. This information is considered to be commercially sensitive.

Synonyms

ATLD; HNGS1; MRE11A; MRE11B; MRE11

Product Information

Source

Rabbit

Isotype

IgG

Purification

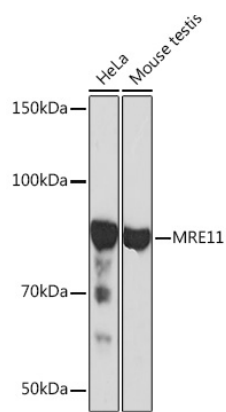
Affinity purification

Storage

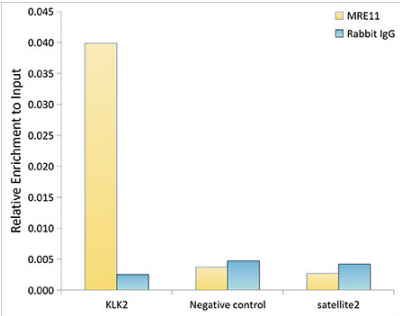
Store at -20°C. Avoid freeze / thaw cycles.

Buffer: PBS with 0.02% sodium azide,0.05% BSA,50% glycerol,pH7.3.

Validation Data



Western blot analysis of various lysates using MRE11 Rabbit mAb (A4222) at 1:1000 dilution.
Secondary antibody: HRP-conjugated Goat anti-Rabbit IgG (H+L) (AS014) at 1:10000 dilution.
Lysates/proteins: 25µg per lane.
Blocking buffer: 3% nonfat dry milk in TBST.
Detection: ECL Basic Kit (RM00020).
Exposure time: 30s.



Chromatin immunoprecipitation analysis of extracts of LNCaP cells, using Mre11 antibody (A4222) and rabbit IgG. The amount of immunoprecipitated DNA was checked by quantitative PCR. Histogram was constructed by the ratios of the immunoprecipitated DNA to the input.