

A4343

Leader in Biomolecular Solutions for Life Science



# HMGA1 Rabbit mAb

Catalog No.: A4343

Recombinant

2 Publications

## Basic Information

### Observed MW

18kDa

### Calculated MW

12kDa

### Category

SMab Recombinant Monoclonal  
Antibody

### Applications

WB,IHC-P,IF/ICC,ChIP-seq,ELISA

### Cross-Reactivity

Human,Mouse,Rat

### CloneNo number

ARC1060

## Background

This gene encodes a chromatin-associated protein involved in the regulation of gene transcription, integration of retroviruses into chromosomes, and the metastatic progression of cancer cells. The encoded protein preferentially binds to the minor groove of AT-rich regions in double-stranded DNA. Multiple transcript variants encoding different isoforms have been found for this gene. Pseudogenes of this gene have been identified on multiple chromosomes.

## Recommended Dilutions

WB 1:1000 - 1:4000

IHC-P 1:2000 - 1:8000

IF/ICC 1:100 - 1:1000

ELISA Recommended starting concentration is 1 µg/mL. Please optimize the concentration based on your specific assay requirements.

ChIP-seq 1:50 - 1:100

## Contact

 [www.abclonal.com](http://www.abclonal.com)

## Immunogen Information

### Gene ID

3159

### Swiss Prot

P17096

### Immunogen

Synthetic peptide. This information is considered to be commercially sensitive.

### Synonyms

HMG-R; HMGIY; HMGA1A; HMGA1

## Product Information

### Source

Rabbit

### Isotype

IgG

### Purification

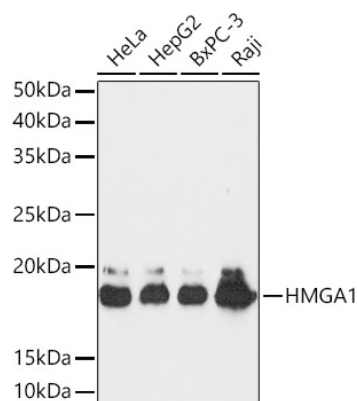
Affinity purification

### Storage

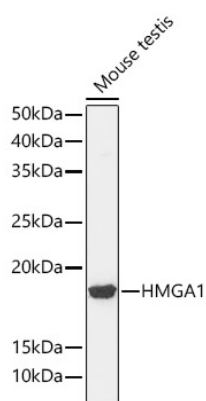
Store at -20°C. Avoid freeze / thaw cycles.

Buffer: PBS with 0.02% sodium azide,0.05% BSA,50% glycerol,pH7.3.

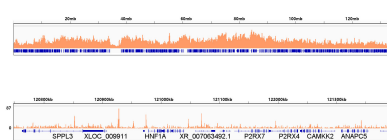
## Validation Data



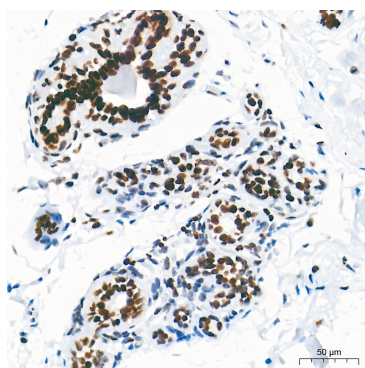
Western blot analysis of various lysates using HMGA1 Rabbit mAb (A4343) at 1:1000 dilution.  
 Secondary antibody: HRP-conjugated Goat anti-Rabbit IgG (H+L) (AS014) at 1:10000 dilution.  
 Lysates/proteins: 25µg per lane.  
 Blocking buffer: 3% nonfat dry milk in TBST.  
 Detection: ECL Basic Kit (RM00020).  
 Exposure time: 30s.



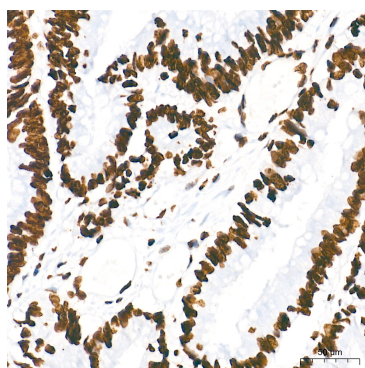
Western blot analysis of lysates from Mouse testis, using HMGA1 Rabbit mAb (A4343) at 1:1000 dilution.  
 Secondary antibody: HRP-conjugated Goat anti-Rabbit IgG (H+L) (AS014) at 1:10000 dilution.  
 Lysates/proteins: 25µg per lane.  
 Blocking buffer: 3% nonfat dry milk in TBST.  
 Detection: ECL Basic Kit (RM00020).  
 Exposure time: 90s.



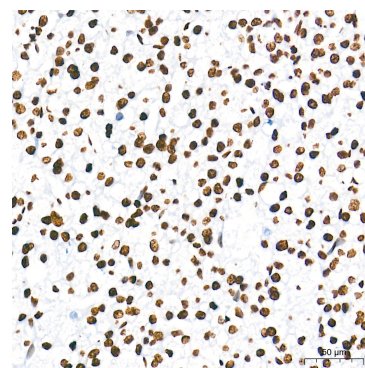
Chromatin immunoprecipitation was performed with 25 µg of cross-linked chromatin from HepG2 cells using 5 µg of HMGA1 Rabbit mAb (A4343). DNA libraries were prepared using Scale ssDNA-seq Lib Prep Kit for Illumina V2 (RK20228). The ChIP sequencing results indicate the enrichment pattern of HMGA1 across chromosome 12(upper panel) and the genomic region encompassing HNF1A, a representative gene enriched in HMGA1 (lower panel).



Immunohistochemistry analysis of paraffin-embedded Human breast tissue using HMGA1 Rabbit mAb (A4343) at a dilution of 1:5000 (40x)



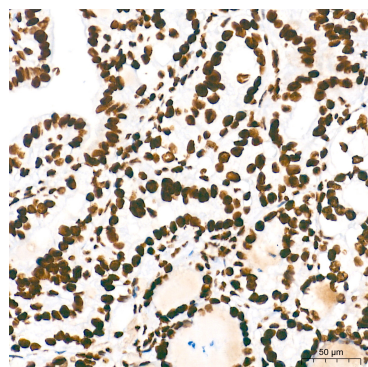
Immunohistochemistry analysis of paraffin-embedded Human colon carcinoma tissue using HMGA1 Rabbit mAb (A4343) at a dilution of 1:5000 (40x)



Immunohistochemistry analysis of paraffin-embedded Human liver cancer tissue using HMGA1 Rabbit mAb (A4343) at a dilution of 1:5000 (40x)

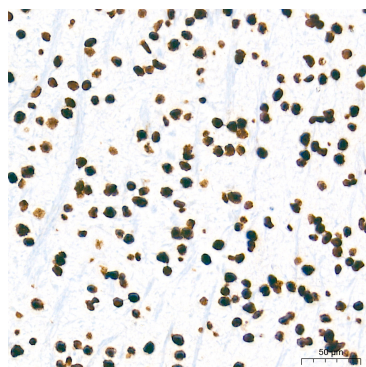
## Validation Data

lens). High pressure antigen retrieval performed with 0.01M Tris-EDTA Buffer (pH 9.0) prior to IHC staining.



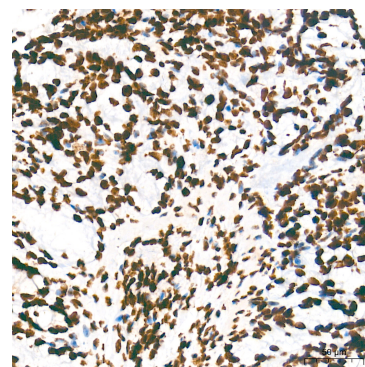
Immunohistochemistry analysis of paraffin-embedded Human thyroid cancer tissue using HMGA1 Rabbit mAb (A4343) at a dilution of 1:5000 (40x lens). High pressure antigen retrieval performed with 0.01M Tris-EDTA Buffer (pH 9.0) prior to IHC staining.

1:5000 (40x lens). High pressure antigen retrieval performed with 0.01M Tris-EDTA Buffer (pH 9.0) prior to IHC staining.

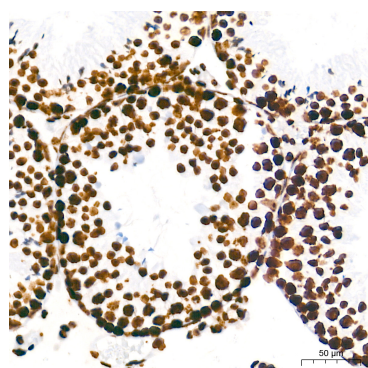


Immunohistochemistry analysis of paraffin-embedded Mouse brain tissue using HMGA1 Rabbit mAb (A4343) at a dilution of 1:5000 (40x lens). High pressure antigen retrieval performed with 0.01M Tris-EDTA Buffer (pH 9.0) prior to IHC staining.

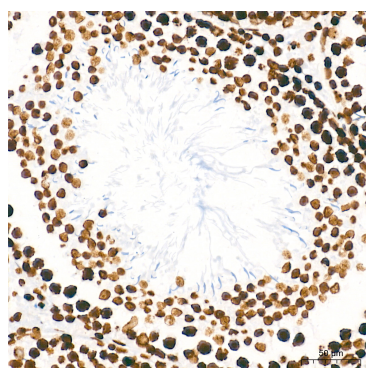
(40x lens). High pressure antigen retrieval performed with 0.01M Tris-EDTA Buffer (pH 9.0) prior to IHC staining.



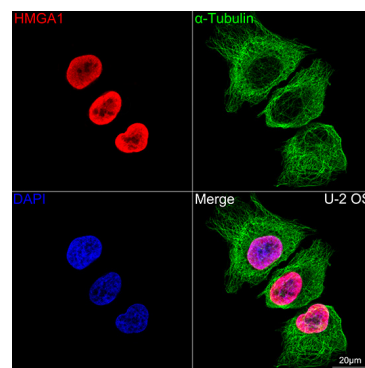
Immunohistochemistry analysis of paraffin-embedded Mouse colon tissue using HMGA1 Rabbit mAb (A4343) at a dilution of 1:5000 (40x lens). High pressure antigen retrieval performed with 0.01M Tris-EDTA Buffer (pH 9.0) prior to IHC staining.



Immunohistochemistry analysis of paraffin-embedded Mouse testis tissue using HMGA1 Rabbit mAb (A4343) at a dilution of 1:5000 (40x lens). High pressure antigen retrieval performed with 0.01M Tris-EDTA Buffer (pH 9.0) prior to IHC staining.



Immunohistochemistry analysis of paraffin-embedded Rat testis tissue using HMGA1 Rabbit mAb (A4343) at a dilution of 1:5000 (40x lens). High pressure antigen retrieval performed with 0.01M Tris-EDTA Buffer (pH 9.0) prior to IHC staining.



Confocal imaging of U-2 OS cells using HMGA1 Rabbit mAb (A4343, dilution 1:100) (Red). The cells were counterstained with  $\alpha$ -Tubulin Mouse mAb (AC012, dilution 1:400) (Green). DAPI was used for nuclear staining (blue). Objective: 100x.