

A4408

Leader in Biomolecular Solutions for Life Science



# HMG20B Rabbit pAb

Catalog No.: A4408

2 Publications

## Basic Information

### Observed MW

36kDa

### Calculated MW

36kDa

### Category

Polyclonal Antibody

### Applications

WB,ELISA

### Cross-Reactivity

Human,Mouse

## Background

Predicted to enable DNA binding activity. Predicted to be involved in regulation of gene expression. Predicted to act upstream of or within negative regulation of protein sumoylation; positive regulation of neuron differentiation; and skeletal muscle cell differentiation. Located in nuclear body.

## Recommended Dilutions

**WB** 1:500 - 1:1000

**ELISA** Recommended starting concentration is 1 µg/mL. Please optimize the concentration based on your specific assay requirements.

## Immunogen Information

### Gene ID

10362

### Swiss Prot

Q9P0W2

### Immunogen

Recombinant protein (or fragment). This information is considered to be commercially sensitive.

### Synonyms

SOXL; HMGX2; BRAF25; BRAF35; HMGXB2; PP7706; pp8857; SMARCE1r; HMG20B

## Contact



[www.abclonal.com](http://www.abclonal.com)

## Product Information

### Source

Rabbit

### Isotype

IgG

### Purification

Affinity purification

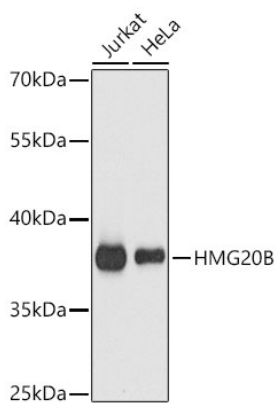
### Storage

Store at -20°C. Avoid freeze / thaw cycles.

Buffer: PBS with 0.02% sodium azide, 50% glycerol, pH7.3.

## Validation Data

---



Western blot analysis of various lysates using HMG20B Rabbit pAb (A4408) at 1:1000 dilution.

Secondary antibody: HRP-conjugated Goat anti-Rabbit IgG (H+L) (AS014) at 1:10000 dilution.

Lysates / proteins: 25 µg per lane.

Blocking buffer: 3 % nonfat dry milk in TBST.

Detection: ECL Basic Kit (RM00020).

Exposure time: 5s.