

A4418

Leader in Biomolecular Solutions for Life Science



RBM14 Rabbit pAb

Catalog No.: A4418

Basic Information

Observed MW

75kDa

Calculated MW

69kDa

Category

Polyclonal Antibody

Applications

WB,ELISA

Cross-Reactivity

Human,Mouse,Rat

Background

This gene encodes a ribonucleoprotein that functions as a general nuclear coactivator, and an RNA splicing modulator. This protein contains two RNA recognition motifs (RRM) at the N-terminus, and multiple hexapeptide repeat domain at the C-terminus that interacts with thyroid hormone receptor-binding protein (TRBP), and is required for transcription activation. Alternatively spliced transcript variants encoding different isoforms (with opposing effects on transcription) have been described for this gene.

Recommended Dilutions

WB 1:500 - 1:1000

ELISA Recommended starting concentration is 1 µg/mL. Please optimize the concentration based on your specific assay requirements.

Immunogen Information

Gene ID
10432

Swiss Prot
Q96PK6

Immunogen

Recombinant protein (or fragment). This information is considered to be commercially sensitive.

Synonyms

SIP; COAA; PSP2; SYTIP1; TMEM137; RBM14

Contact



www.abclonal.com

Product Information

Source
Rabbit

Isotype
IgG

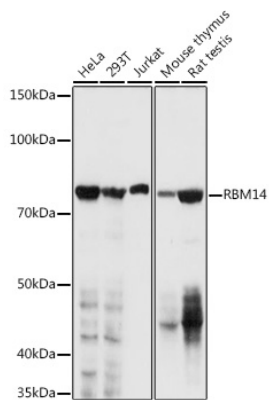
Purification
Affinity purification

Storage

Store at -20°C. Avoid freeze / thaw cycles.

Buffer: PBS with 0.09% Sodium azide, 50% glycerol, pH7.3.

Validation Data



Western blot analysis of various lysates using RBM14 Rabbit pAb (A4418) at 1:1000 dilution.
Secondary antibody: HRP-conjugated Goat anti-Rabbit IgG (H+L) (AS014) at 1:10000 dilution.
Lysates/proteins: 25µg per lane.
Blocking buffer: 3% nonfat dry milk in TBST.
Detection: ECL Basic Kit (RM00020).
Exposure time: 3s.