

A4451

Leader in Biomolecular Solutions for Life Science



## RBBP9 Rabbit pAb

Catalog No.: A4451

### Basic Information

#### Observed MW

18kDa

#### Calculated MW

21kDa

#### Category

Polyclonal Antibody

#### Applications

WB,IHC-P,ELISA

#### Cross-Reactivity

Human,Mouse,Rat

### Background

The protein encoded by this gene is a retinoblastoma binding protein that may play a role in the regulation of cell proliferation and differentiation. Two alternatively spliced transcript variants of this gene with identical predicted protein products have been reported, one of which is a nonsense-mediated decay candidate.

### Recommended Dilutions

**WB** 1:500 - 1:2000

**IHC-P** 1:50 - 1:200

**ELISA** Recommended starting concentration is 1 µg/mL. Please optimize the concentration based on your specific assay requirements.

### Immunogen Information

#### Gene ID

10741

#### Swiss Prot

O75884

#### Immunogen

Recombinant protein (or fragment). This information is considered to be commercially sensitive.

#### Synonyms

BOG; RBBP10; RBBP9

### Contact



[www.abclonal.com](http://www.abclonal.com)

### Product Information

#### Source

Rabbit

#### Isotype

IgG

#### Purification

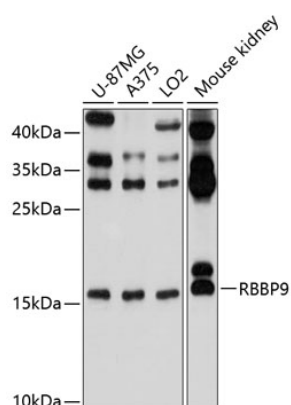
Affinity purification

#### Storage

Store at -20°C. Avoid freeze / thaw cycles.

Buffer: PBS with 0.02% sodium azide, 50% glycerol, pH7.3.

## Validation Data



Western blot analysis of various lysates using RBBP9 Rabbit pAb (A4451) at 1:1000 dilution.

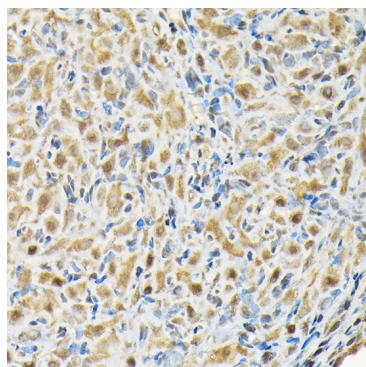
Secondary antibody: HRP-conjugated Goat anti-Rabbit IgG (H+L) (AS014) at 1:10000 dilution.

Lysates/proteins: 25µg per lane.

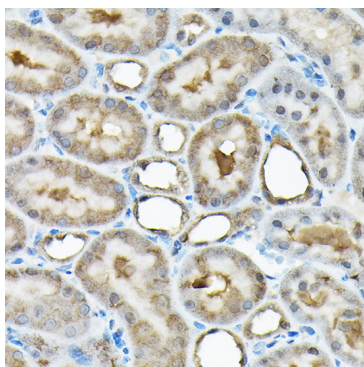
Blocking buffer: 3% nonfat dry milk in TBST.

Detection: ECL Basic Kit (RM00020).

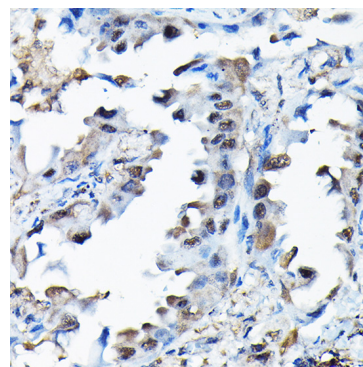
Exposure time: 10s.



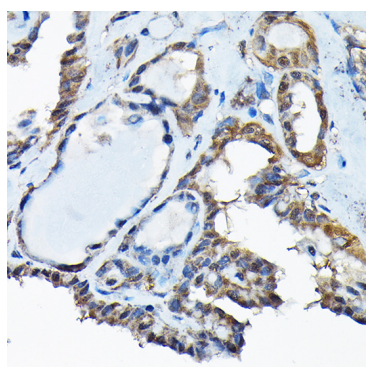
Immunohistochemistry analysis of paraffin-embedded Rat ovary using RBBP9 Rabbit pAb (A4451) at dilution of 1:200 (40x lens). High pressure antigen retrieval performed with 0.01M Citrate buffer (pH 6.0) prior to IHC staining.



Immunohistochemistry analysis of paraffin-embedded Rat kidney using RBBP9 Rabbit pAb (A4451) at dilution of 1:200 (40x lens). High pressure antigen retrieval performed with 0.01M Citrate buffer (pH 6.0) prior to IHC staining.



Immunohistochemistry analysis of paraffin-embedded Human lung cancer using RBBP9 Rabbit pAb (A4451) at dilution of 1:200 (40x lens). High pressure antigen retrieval performed with 0.01M Citrate buffer (pH 6.0) prior to IHC staining.



Immunohistochemistry analysis of paraffin-embedded Human thyroid cancer using RBBP9 Rabbit pAb (A4451) at dilution of 1:200 (40x lens). High pressure antigen retrieval performed with 0.01M Citrate buffer (pH 6.0) prior to IHC staining.