

A4518

Leader in Biomolecular Solutions for Life Science



## KIFAP3 Rabbit pAb

Catalog No.: A4518

1 Publications

### Basic Information

#### Observed MW

110kDa

#### Calculated MW

91kDa

#### Category

Polyclonal Antibody

#### Applications

WB,IF/ICC,IP,ELISA

#### Cross-Reactivity

Human,Mouse,Rat

### Background

The small G protein GDP dissociation stimulator (smg GDS) is a regulator protein having two activities on a group of small G proteins including the Rho and Rap1 family members and Ki-Ras; one is to stimulate their GDP/GTP exchange reactions, and the other is to inhibit their interactions with membranes. The protein encoded by this gene contains 9 'Armadillo' repeats and interacts with the smg GDS protein through these repeats. This protein, which is highly concentrated around the endoplasmic reticulum, is phosphorylated by v-src, and this phosphorylation reduces the affinity of the protein for smg GDS. It is thought that this protein serves as a linker between human chromosome-associated polypeptide (HCAP) and KIF3A/B, a kinesin superfamily protein in the nucleus, and that it plays a role in the interaction of chromosomes with an ATPase motor protein. Several transcript variants encoding different isoforms have been found for this gene.

### Recommended Dilutions

**WB** 1:500 - 1:2000

**IF/ICC** 1:50 - 1:200

**IP** 0.5µg-4µg antibody for  
200µg-400µg extracts  
of whole cells

**ELISA** Recommended starting  
concentration is 1  
µg/mL. Please optimize  
the concentration  
based on your specific  
assay requirements.

### Immunogen Information

#### Gene ID

22920

#### Swiss Prot

Q92845

#### Immunogen

Recombinant protein (or fragment). This information is considered to be commercially sensitive.

#### Synonyms

FLA3; KAP3; SMAP; KAP-1; KAP-3; Smg-GDS; dJ190I16.1; KIFAP3

### Product Information

#### Source

Rabbit

#### Isotype

IgG

#### Purification

Affinity purification

#### Storage

Store at -20°C. Avoid freeze / thaw cycles.

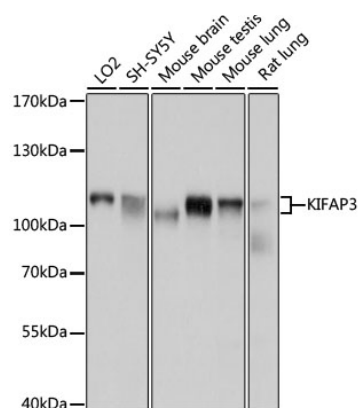
Buffer: PBS with 0.02% sodium azide, 50% glycerol, pH7.3.

### Contact

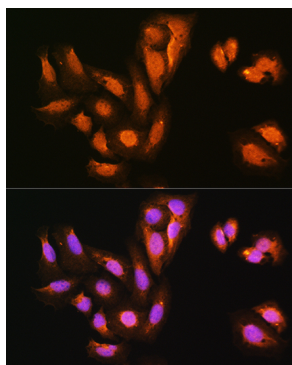


[www.abclonal.com](http://www.abclonal.com)

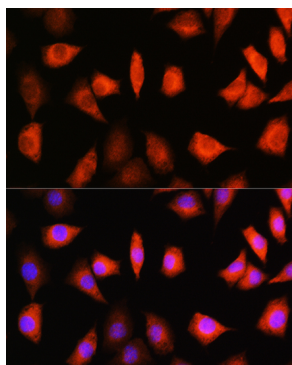
## Validation Data



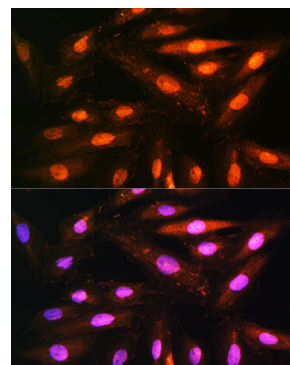
Western blot analysis of various lysates using KIFAP3 Rabbit pAb (A4518) at 1:1000 dilution.  
 Secondary antibody: HRP-conjugated Goat anti-Rabbit IgG (H+L) (AS014) at 1:10000 dilution.  
 Lysates/proteins: 25µg per lane.  
 Blocking buffer: 3% nonfat dry milk in TBST.  
 Detection: ECL Basic Kit (RM00020).  
 Exposure time: 5s.



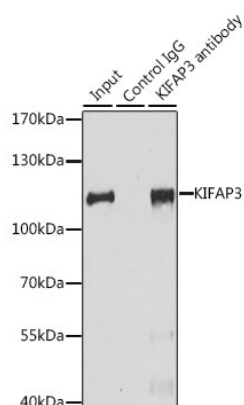
Immunofluorescence analysis of U2OS cells using KIFAP3 Rabbit pAb (A4518) at dilution of 1:100.  
 Secondary antibody: Cy3-conjugated Goat anti-Rabbit IgG (H+L) (AS007) at 1:500 dilution. Blue: DAPI for nuclear staining.



Immunofluorescence analysis of L929 cells using KIFAP3 Rabbit pAb (A4518) at dilution of 1:100.  
 Secondary antibody: Cy3-conjugated Goat anti-Rabbit IgG (H+L) (AS007) at 1:500 dilution. Blue: DAPI for nuclear staining.



Immunofluorescence analysis of H9C2 cells using KIFAP3 Rabbit pAb (A4518) at dilution of 1:100.  
 Secondary antibody: Cy3-conjugated Goat anti-Rabbit IgG (H+L) (AS007) at 1:500 dilution. Blue: DAPI for nuclear staining.



Immunoprecipitation analysis of 200 µg extracts of HeLa cells, using 3 µg KIFAP3 antibody (A4518). Western blot was performed from the immunoprecipitate using KIFAP3 antibody (A4518) at a dilution of 1:1000.