

A4581

Leader in Biomolecular Solutions for Life Science



EML2 Rabbit pAb

Catalog No.: A4581

Basic Information

Observed MW

71kDa

Calculated MW

71kDa

Category

Polyclonal Antibody

Applications

WB,ELISA

Cross-Reactivity

Human,Mouse

Background

Enables microtubule binding activity. Involved in negative regulation of microtubule polymerization and regulation of microtubule nucleation. Colocalizes with mitotic spindle.

Recommended Dilutions

WB 1:500 - 1:2000

ELISA Recommended starting concentration is 1 µg/mL. Please optimize the concentration based on your specific assay requirements.

Immunogen Information

Gene ID

24139

Swiss Prot

O95834

Immunogen

Recombinant protein (or fragment). This information is considered to be commercially sensitive.

Synonyms

ELP70; EMAP2; EMAP-2; EML2

Contact

 www.abclonal.com

Product Information

Source

Rabbit

Isotype

IgG

Purification

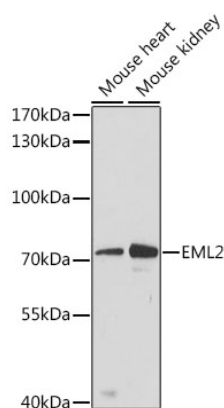
Affinity purification

Storage

Store at -20°C. Avoid freeze / thaw cycles.

Buffer: PBS with 0.01% thimerosal, 50% glycerol, pH7.3.

Validation Data



Western blot analysis of various lysates using EML2 Rabbit pAb (A4581) at 1:3000 dilution.

Secondary antibody: HRP-conjugated Goat anti-Rabbit IgG (H+L) (AS014) at 1:10000 dilution.

Lysates/proteins: 25µg per lane.

Blocking buffer: 3% nonfat dry milk in TBST.

Detection: ECL Basic Kit (RM00020).

Exposure time: 90s.