

A4704

Leader in Biomolecular Solutions for Life Science



# LAP3 Rabbit pAb

Catalog No.: A4704

## Basic Information

### Observed MW

55kDa

### Calculated MW

56kDa

### Category

Polyclonal Antibody

### Applications

WB

### Cross-Reactivity

Human

## Background

Predicted to enable peptidase activity. Predicted to be involved in proteolysis. Located in cytosol; midbody; and nucleoplasm.

## Recommended Dilutions

WB 1:500 - 1:1000

## Immunogen Information

### Gene ID

51056

### Swiss Prot

P28838

### Immunogen

Synthetic peptide. This information is considered to be commercially sensitive.

### Synonyms

LAP; PEPS; LAPEP; HEL-S-106; LAP3

## Contact



[www.abclonal.com](http://www.abclonal.com)

## Product Information

### Source

Rabbit

### Isotype

IgG

### Purification

Affinity purification

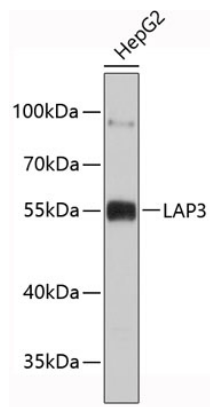
### Storage

Store at 4°C. Avoid freeze / thaw cycles.

Buffer: PBS with 0.02% sodium azide,pH7.3.

## Validation Data

---



Western blot analysis of lysates from HepG2 cells, using LAP3 Rabbit pAb (A4704).  
Secondary antibody: HRP-conjugated Goat anti-Rabbit IgG (H+L) (AS014) at 1:10000 dilution.  
Lysates/proteins: 25µg per lane.  
Blocking buffer: 3% nonfat dry milk in TBST.