

A4893

Leader in Biomolecular Solutions for Life Science



CD20 Rabbit mAb

Catalog No.: A4893

Recombinant

6 Publications

Basic Information

Observed MW

30-50kDa

Calculated MW

33kDa

Category

SMab Recombinant Monoclonal
Antibody

Applications

WB,IHC-P,IF/ICC,FC,ELISA

Cross-Reactivity

Human

CloneNo number

ARC51683

Recommended Dilutions

WB 1:1000 - 1:2000

IHC-P 1:1000 - 1:10000

IF/ICC 1:800 - 1:3200

FC 1:50 - 1:200

ELISA Recommended starting
concentration is 1
µg/mL. Please optimize
the concentration
based on your specific
assay requirements.

Contact



www.abclonal.com

Background

This gene encodes a member of the membrane-spanning 4A gene family. Members of this nascent protein family are characterized by common structural features and similar intron/exon splice boundaries and display unique expression patterns among hematopoietic cells and nonlymphoid tissues. This gene encodes a B-lymphocyte surface molecule which plays a role in the development and differentiation of B-cells into plasma cells. This family member is localized to 11q12, among a cluster of family members. Alternative splicing of this gene results in two transcript variants which encode the same protein.

Immunogen Information

Gene ID

931

Swiss Prot

P11836

Immunogen

Synthetic peptide. This information is considered to be commercially sensitive.

Synonyms

B1; S7; Bp35; CD20; FMC7; CVID5; LEU-16

Product Information

Source

Rabbit

Isotype

IgG

Purification

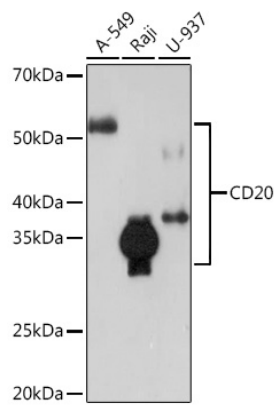
Affinity purification

Storage

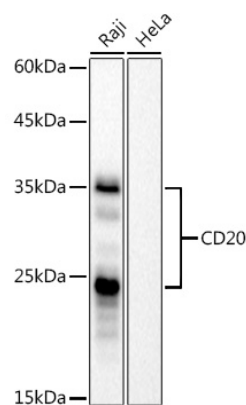
Store at -20°C. Avoid freeze / thaw cycles.

Buffer: PBS with 0.09% Sodium azide,0.05% BSA,50% glycerol,pH7.3.

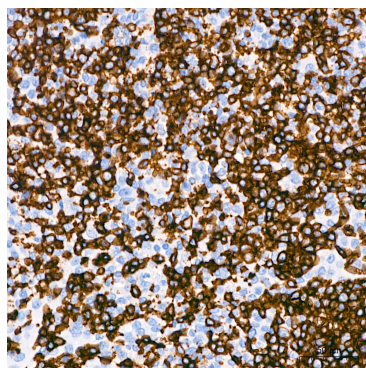
Validation Data



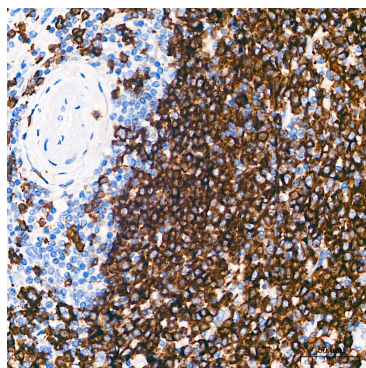
Western blot analysis of various lysates using CD20 Rabbit mAb (A4893) at 1:1000 dilution.
Secondary antibody: HRP-conjugated Goat anti-Rabbit IgG (H+L) (AS014) at 1:10000 dilution.
Lysates/proteins: 25µg per lane.
Blocking buffer: 3% nonfat dry milk in TBST.
Detection: ECL Enhanced Kit (RM00021).
Exposure time: 3min.



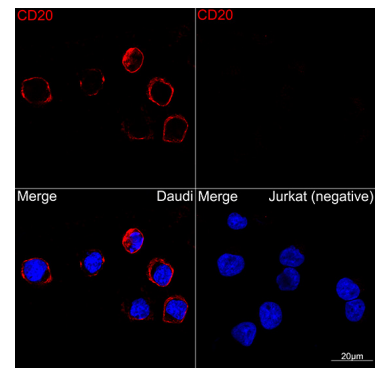
Western blot analysis of various lysates, using CD20 Rabbit mAb (A4893) at 1:1000 dilution.
Secondary antibody: HRP-conjugated Goat anti-Rabbit IgG (H+L) (AS014) at 1:10000 dilution.
Lysates/proteins: 25µg per lane.
Blocking buffer: 3% nonfat dry milk in TBST.
Detection: ECL Basic Kit (RM00020).
Negative control (NC): HeLa
Exposure time: 60s.



Immunohistochemistry analysis of paraffin-embedded Human tonsil tissue using CD20 Rabbit mAb (A4893) at a dilution of 1:1000 (40x lens). High pressure antigen retrieval performed with 0.01M Tris-EDTA Buffer(pH 9.0) prior to IHC staining.

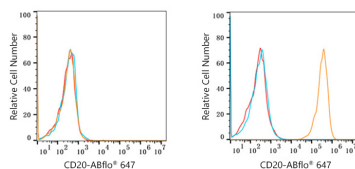


Immunohistochemistry analysis of paraffin-embedded Human spleen tissue using CD20 Rabbit mAb (A4893) at a dilution of 1:1000 (40x lens). High pressure antigen retrieval performed with 0.01M Tris-EDTA Buffer(pH 9.0) prior to IHC staining.



Confocal imaging of Daudi and Jurkat(Negative control) cells using CD20 Rabbit mAb (A4893, dilution 1:1000)(Red). DAPI was used for nuclear staining (blue). Objective: 100x.

Validation Data



Flow cytometry: 1×10^6 Jurkat cells (negative control, left) and Daudi cells (right) were surface-stained with CD20 Rabbit mAb (A4893, 10 $\mu\text{g/mL}$ orange line) or ABflo® 647 Rabbit IgG isotype control (AC042, 10 $\mu\text{g/mL}$, blue line). Non-fluorescently stained cells were used as blank control (red line).