

A4913

Leader in Biomolecular Solutions for Life Science



## NAPB Rabbit pAb

Catalog No.: A4913

### Basic Information

**Observed MW**

36kDa

**Calculated MW**

34kDa

**Category**

Polyclonal Antibody

**Applications**

WB

**Cross-Reactivity**

Human

### Background

This gene encodes a member of the soluble N-ethyl-maleimide-sensitive fusion attachment protein (SNAP) family. SNAP proteins play a critical role in the docking and fusion of vesicles to target membranes as part of the 20S NSF-SNAP-SNARE complex. This gene encodes the SNAP beta isoform which has been shown to be preferentially expressed in brain tissue. The encoded protein also interacts with the GluR2 &#945;-amino-3-hydroxy-5-methyl-4-isoxazolepropionate (AMPA) receptor subunit C-terminus and may play a role as a chaperone in the molecular processing of the AMPA receptor.

### Recommended Dilutions

WB 1:500 - 1:1000

### Immunogen Information

**Gene ID**

63908

**Swiss Prot**

Q9H115

**Immunogen**

Synthetic peptide. This information is considered to be commercially sensitive.

**Synonyms**

SNAPB; DEE107; SNAP-BETA; NAPB

### Contact



[www.abclonal.com](http://www.abclonal.com)

### Product Information

**Source**

Rabbit

**Isotype**

IgG

**Purification**

Affinity purification

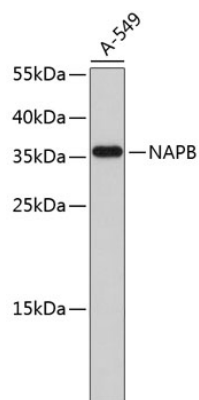
**Storage**

Store at 4°C. Avoid freeze / thaw cycles.

Buffer: PBS with 0.02% sodium azide, pH7.3.

## Validation Data

---



Western blot analysis of lysates from A-549 cells, using NAPB Rabbit pAb (A4913).  
Secondary antibody: HRP-conjugated Goat anti-Rabbit IgG (H+L) (AS014) at 1:10000 dilution.  
Lysates/proteins: 25µg per lane.  
Blocking buffer: 3% nonfat dry milk in TBST.