

A4921

Leader in Biomolecular Solutions for Life Science



CDCA3 Rabbit mAb

Catalog No.: A4921

Recombinant

Basic Information

Observed MW

29kDa

Calculated MW

29kDa

Category

SMab Recombinant Monoclonal
Antibody

Applications

WB,IHC-P,ELISA

Cross-Reactivity

Human

CloneNo number

ARC2135

Background

Predicted to be involved in cell division and protein ubiquitination. Located in adherens junction.

Recommended Dilutions

WB 1:500 - 1:1000

IHC-P 1:50 - 1:200

ELISA Recommended starting concentration is 1 µg/mL. Please optimize the concentration based on your specific assay requirements.

Immunogen Information

Gene ID

83461

Swiss Prot

Q99618

Immunogen

Synthetic peptide. This information is considered to be commercially sensitive.

Synonyms

GRCC8; TOME1; TOME-1; CDCA3

Contact

 www.abclonal.com

Product Information

Source

Rabbit

Isotype

IgG

Purification

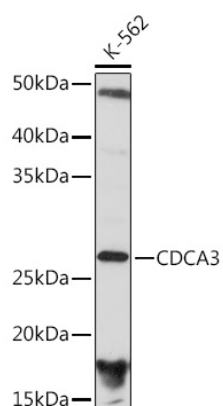
Affinity purification

Storage

Store at -20°C. Avoid freeze / thaw cycles.

Buffer: PBS with 0.02% sodium azide,0.05% BSA,50% glycerol,pH7.3.

Validation Data



Western blot analysis of lysates from K-562 cells, using CDCA3 Rabbit mAb (A4921) at 1:1000 dilution.

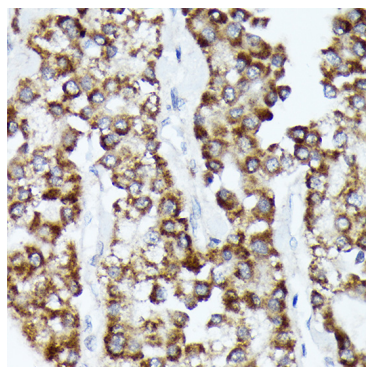
Secondary antibody: HRP-conjugated Goat anti-Rabbit IgG (H+L) (AS014) at 1:10000 dilution.

Lysates/proteins: 25µg per lane.

Blocking buffer: 3% nonfat dry milk in TBST.

Detection: ECL Basic Kit (RM00020).

Exposure time: 180s.



Immunohistochemistry analysis of paraffin-embedded Human liver cancer using CDCA3 Rabbit mAb (A4921) at dilution of 1:100 (40x lens). Microwave antigen retrieval performed with 0.01M Tris/EDTA Buffer (pH 9.0) prior to IHC staining.