

A4976

Leader in Biomolecular Solutions for Life Science



NLRX1 Rabbit pAb

Catalog No.: A4976

1 Publications

Basic Information

Observed MW

108kDa

Calculated MW

108kDa

Category

Polyclonal Antibody

Applications

WB,IP,ELISA

Cross-Reactivity

Human,Mouse,Rat

Background

The protein encoded by this gene is a member of the NLR family and localizes to the outer mitochondrial membrane. The encoded protein is a regulator of mitochondrial antiviral responses. Three transcript variants encoding the same protein have been found for this gene.

Recommended Dilutions

WB 1:500 - 1:2000

IP 0.5µg-4µg antibody for
400µg-600µg extracts
of whole cells

ELISA Recommended starting
concentration is 1
µg/mL. Please optimize
the concentration
based on your specific
assay requirements.

Immunogen Information

Gene ID

79671

Swiss Prot

Q86UT6

Immunogen

Recombinant protein (or fragment). This information is considered to be commercially sensitive.

Synonyms

NOD5; NOD9; NOD26; DLNB26; CLR11.3; NLRX1

Product Information

Source

Rabbit

Isotype

IgG

Purification

Affinity purification

Storage

Store at -20°C. Avoid freeze / thaw cycles.

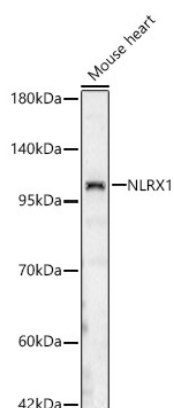
Buffer: PBS containing 50% glycerol, preserved with proclin300 or sodium azide (as specified on the Certificate of Analysis), pH 7.3.

Contact



www.abclonal.com

Validation Data



Western blot analysis of lysates from Mouse heart, using NLRX1 Rabbit pAb (A4976) at 1:2000 dilution.

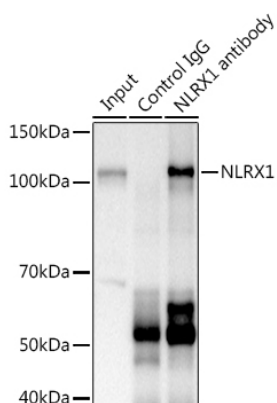
Secondary antibody: HRP-conjugated Goat anti-Rabbit IgG (H+L) (AS014) at 1:10000 dilution.

Lysates/proteins: 25µg per lane.

Blocking buffer: 3% nonfat dry milk in TBST.

Detection: ECL Basic Kit (RM00020).

Exposure time: 60s.



Immunoprecipitation analysis of 600 µg extracts of Mouse kidney using 3 µg NLRX1 antibody (A4976). Western blot was performed from the immunoprecipitate using NLRX1 (A4976) at a dilution of 1:1000.