

A5009

Leader in Biomolecular Solutions for Life Science



## GLP-2 Rabbit mAb

Catalog No.: A5009

Recombinant

2 Publications

### Basic Information

#### Observed MW

#### Calculated MW

21kDa

#### Category

SMab Recombinant Monoclonal  
Antibody

#### Applications

IHC-P,IF/ICC,ELISA

#### Cross-Reactivity

Mouse,Rat

#### CloneNo number

ARC1143

### Background

The protein encoded by this gene is actually a preproprotein that is cleaved into four distinct mature peptides. One of these, glucagon, is a pancreatic hormone that counteracts the glucose-lowering action of insulin by stimulating glycogenolysis and gluconeogenesis. Glucagon is a ligand for a specific G-protein linked receptor whose signalling pathway controls cell proliferation. Two of the other peptides are secreted from gut endocrine cells and promote nutrient absorption through distinct mechanisms. Finally, the fourth peptide is similar to glicentin, an active enteroglucagon.

### Recommended Dilutions

IHC-P 1:50 - 1:200

IF/ICC 1:50 - 1:200

**ELISA** Recommended starting concentration is 1 µg/mL. Please optimize the concentration based on your specific assay requirements.

### Immunogen Information

#### Gene ID

2641

#### Swiss Prot

P01275

#### Immunogen

Synthetic peptide. This information is considered to be commercially sensitive.

#### Synonyms

GLP1; GLP2; GRPP; GLP-1; GLP-2

### Contact



[www.abclonal.com](http://www.abclonal.com)

### Product Information

#### Source

Rabbit

#### Isotype

IgG

#### Purification

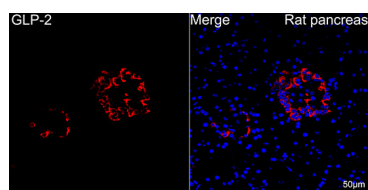
Affinity purification

#### Storage

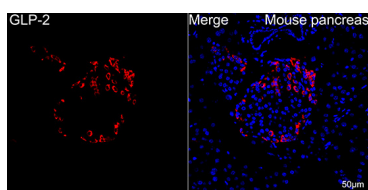
Store at -20°C. Avoid freeze / thaw cycles.

Buffer: PBS with 0.02% sodium azide,0.05% BSA,50% glycerol,pH7.3.

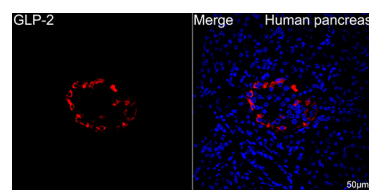
## Validation Data



Confocal imaging of paraffin-embedded Rat pancreas tissue using GLP-2 Rabbit mAb (A5009, dilution 1:200) followed by a further incubation with Cy3 Goat Anti-Rabbit IgG (H+L) (AS007, dilution 1:500) (Red). DAPI was used for nuclear staining (Blue). Objective: 40x. Perform high pressure antigen retrieval with 0.01 M citrate buffer (pH 6.0) prior to IF staining.



Confocal imaging of paraffin-embedded Mouse pancreas tissue using GLP-2 Rabbit mAb (A5009, dilution 1:200) followed by a further incubation with Cy3 Goat Anti-Rabbit IgG (H+L) (AS007, dilution 1:500) (Red). DAPI was used for nuclear staining (Blue). Objective: 40x. Perform high pressure antigen retrieval with 0.01 M citrate buffer (pH 6.0) prior to IF staining.



Confocal imaging of paraffin-embedded Human pancreas tissue using GLP-2 Rabbit mAb (A5009, dilution 1:200) followed by a further incubation with Cy3 Goat Anti-Rabbit IgG (H+L) (AS007, dilution 1:500) (Red). DAPI was used for nuclear staining (Blue). High pressure antigen retrieval performed with 0.01M Citrate Buffer (pH 6.0) prior to IF staining. Objective: 40x.