

A5099

Leader in Biomolecular Solutions for Life Science



## [KO Validated] ATPIF1 Rabbit pAb

Catalog No.: A5099 **KO** Validated

### Basic Information

#### Observed MW

12kDa

#### Calculated MW

12kDa

#### Category

Polyclonal Antibody

#### Applications

WB,IF/ICC,IP,ELISA

#### Cross-Reactivity

Human,Mouse

### Background

Enables several functions, including ATPase binding activity; angiostatin binding activity; and mitochondrial proton-transporting ATP synthase complex binding activity. Involved in several processes, including mitochondrial depolarization; negative regulation of ATPase activity; and regulation of protein targeting to mitochondrion. Located in cell surface and mitochondrion.

### Recommended Dilutions

**WB** 1:500 - 1:1000

**IF/ICC** 1:50 - 1:100

**IP** 0.5µg-4µg antibody for  
200µg-400µg extracts  
of whole cells

**ELISA** Recommended starting  
concentration is 1  
µg/mL. Please optimize  
the concentration  
based on your specific  
assay requirements.

### Immunogen Information

**Gene ID**  
93974

**Swiss Prot**  
Q9UII2

#### Immunogen

Recombinant protein (or fragment). This information is considered to be commercially sensitive.

#### Synonyms

IP; ATP1; ATP1P; ATP1F1; F1

### Product Information

**Source**  
Rabbit

**Isotype**  
IgG

**Purification**  
Affinity purification

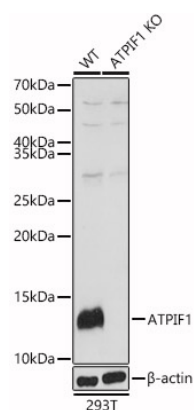
#### Storage

Store at -20°C. Avoid freeze / thaw cycles.  
Buffer: PBS with 0.02% sodium azide, 50% glycerol, pH7.3.

### Contact

 [www.abclonal.com](http://www.abclonal.com)

## Validation Data



Western blot analysis of lysates from wild type (WT) and ATPIF1 knockout (KO) 293T(KO) cells, using [KO Validated] ATPIF1 Rabbit pAb (A5099) at 1:1000 dilution.

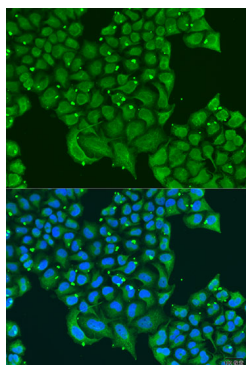
Secondary antibody: HRP-conjugated Goat anti-Rabbit IgG (H+L) (AS014) at 1:10000 dilution.

Lysates/proteins: 25µg per lane.

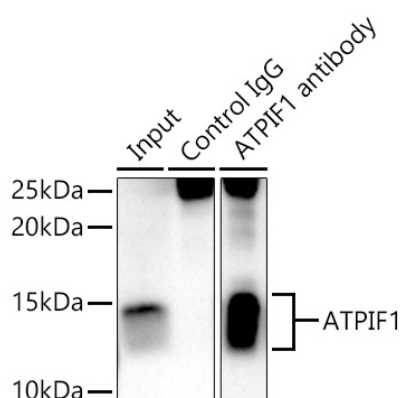
Blocking buffer: 3% nonfat dry milk in TBST.

Detection: ECL Basic Kit (RM00020).

Exposure time: 1s.



Immunofluorescence analysis of U2OS cells using [KO Validated] ATPIF1 Rabbit pAb (A5099) at dilution of 1:100. Secondary antibody: Cy3-conjugated Goat anti-Rabbit IgG (H+L) (AS007) at 1:500 dilution. Blue: DAPI for nuclear staining.



Immunoprecipitation analysis of 300 µg extracts of K-562 cells using 3 µg [KO Validated] ATPIF1 Rabbit pAb (A5099). Western blot was performed from the immunoprecipitate using [KO Validated] ATPIF1 Rabbit pAb (A5099) at a dilution of 1:3000.