

A5107

Leader in Biomolecular Solutions for Life Science



PER2 Rabbit mAb

Catalog No.: A5107

Recombinant

5 Publications

Basic Information

Observed MW

140kDa

Calculated MW

137kDa

Category

SMab Recombinant Monoclonal
Antibody

Applications

WB,ChIP,ELISA

Cross-Reactivity

Human

CloneNo number

ARC1134

Background

This gene is a member of the Period family of genes and is expressed in a circadian pattern in the suprachiasmatic nucleus, the primary circadian pacemaker in the mammalian brain. Genes in this family encode components of the circadian rhythms of locomotor activity, metabolism, and behavior. This gene is upregulated by CLOCK/ARNTL heterodimers but then represses this upregulation in a feedback loop using PER/CRY heterodimers to interact with CLOCK/ARNTL. Polymorphisms in this gene may increase the risk of getting certain cancers and have been linked to sleep disorders.

Recommended Dilutions

WB 1:500 - 1:2000

ELISA Recommended starting concentration is 1 µg/mL. Please optimize the concentration based on your specific assay requirements.

ChIP 5µg antibody for 10µg-15µg of Chromatin

Immunogen Information

Gene ID

8864

Swiss Prot

O15055

Immunogen

Synthetic peptide. This information is considered to be commercially sensitive.

Synonyms

FASPS; FASPS1; PER2

Product Information

Source

Rabbit

Isotype

IgG

Purification

Affinity purification

Storage

Store at -20°C. Avoid freeze / thaw cycles.

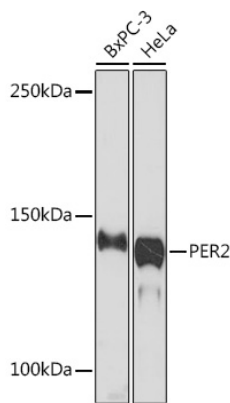
Buffer: PBS with 0.02% sodium azide,0.05% BSA,50% glycerol,pH7.3.

Contact

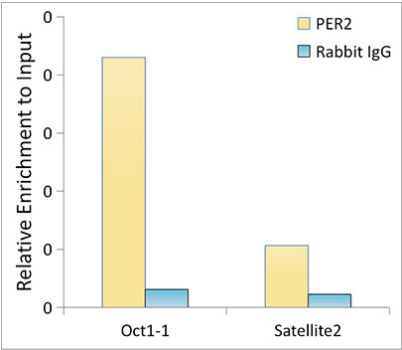


www.abclonal.com

Validation Data



Western blot analysis of various lysates using PER2 Rabbit mAb (A5107) at 1:1000 dilution.
Secondary antibody: HRP-conjugated Goat anti-Rabbit IgG (H+L) (AS014) at 1:10000 dilution.
Lysates/proteins: 25µg per lane.
Blocking buffer: 3% nonfat dry milk in TBST.
Detection: ECL Enhanced Kit (RM00021).
Exposure time: 3min.



Chromatin immunoprecipitation analysis of extracts of MCF7 cells, using PER2 antibody (A5107) and rabbit IgG. The amount of immunoprecipitated DNA was checked by quantitative PCR. Histogram was constructed by the ratios of the immunoprecipitated DNA to the input.