

A5121

Leader in Biomolecular Solutions for Life Science



## TSC1 Rabbit mAb

Catalog No.: A5121

Recombinant

### Basic Information

#### Observed MW

150kDa

#### Calculated MW

130kDa

#### Category

SMab Recombinant Monoclonal  
Antibody

#### Applications

WB, ELISA

#### Cross-Reactivity

Human

#### CloneNo number

ARC1236

### Recommended Dilutions

**WB** 1:500 - 1:1000

**ELISA** Recommended starting concentration is 1 µg/mL. Please optimize the concentration based on your specific assay requirements.

### Contact



[www.abclonal.com](http://www.abclonal.com)

### Background

This gene is a tumor suppressor gene that encodes the growth inhibitory protein hamartin. The encoded protein interacts with and stabilizes the GTPase activating protein tuberin. This hamartin-tuberin complex negatively regulates mammalian target of rapamycin complex 1 (mTORC1) signaling which is a major regulator of anabolic cell growth. This protein also functions as a co-chaperone for Hsp90 that inhibits its ATPase activity. This protein functions as a facilitator of Hsp90-mediated folding of kinase and non-kinase clients, including TSC2 and thereby preventing their ubiquitination and proteasomal degradation. Mutations in this gene have been associated with tuberous sclerosis and lymphangioleiomyomatosis.

### Immunogen Information

#### Gene ID

7248

#### Swiss Prot

Q92574

#### Immunogen

Synthetic peptide. This information is considered to be commercially sensitive.

#### Synonyms

LAM; TSC; TSC1

### Product Information

#### Source

Rabbit

#### Isotype

IgG

#### Purification

Affinity purification

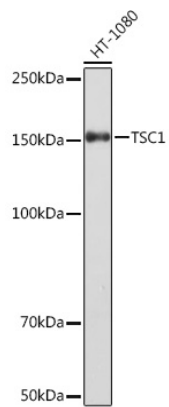
#### Storage

Store at -20°C. Avoid freeze / thaw cycles.

Buffer: PBS with 0.02% sodium azide, 0.05% BSA, 50% glycerol, pH7.3.

## Validation Data

---



Western blot analysis of lysates from HT-1080 cells, using TSC1 Rabbit mAb (A5121) at 1:1000 dilution.

Secondary antibody: HRP-conjugated Goat anti-Rabbit IgG (H+L) (AS014) at 1:10000 dilution.

Lysates/proteins: 25µg per lane.

Blocking buffer: 3% nonfat dry milk in TBST.

Detection: ECL Enhanced Kit (RM00021).

Exposure time: 3min.