

A5144

Leader in Biomolecular Solutions for Life Science



ApoM Rabbit mAb

Catalog No.: A5144

Recombinant

Basic Information

Observed MW

Refer to figures

Calculated MW

21kDa

Category

SMab Recombinant Monoclonal
Antibody

Applications

IF/ICC,ELISA

Cross-Reactivity

Human

CloneNo number

ARC1210

Background

The protein encoded by this gene is an apolipoprotein and member of the lipocalin protein family. It is found associated with high density lipoproteins and to a lesser extent with low density lipoproteins and triglyceride-rich lipoproteins. The encoded protein is secreted through the plasma membrane but remains membrane-bound, where it is involved in lipid transport. Alternate splicing results in both coding and non-coding variants of this gene.

Recommended Dilutions

IF/ICC 1:50 - 1:200

ELISA Recommended starting concentration is 1 µg/mL. Please optimize the concentration based on your specific assay requirements.

Immunogen Information

Gene ID

55937

Swiss Prot

O95445

Immunogen

Synthetic peptide. This information is considered to be commercially sensitive.

Synonyms

G3a; NG20; apo-M; HSPC336; ApoM

Contact

 www.abclonal.com

Product Information

Source

Rabbit

Isotype

IgG

Purification

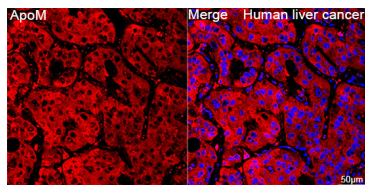
Affinity purification

Storage

Store at -20°C. Avoid freeze / thaw cycles.

Buffer: PBS with 0.02% sodium azide,0.05% BSA,50% glycerol,pH7.3.

Validation Data



Confocal imaging of paraffin-embedded Human liver cancer tissue using ApoM Rabbit mAb (A5144, dilution 1:100) followed by a further incubation with Cy3 Goat Anti-Rabbit IgG (H+L) (AS007, dilution 1:500) (Red). DAPI was used for nuclear staining (Blue). Objective: 40x. Perform high pressure antigen retrieval with 0.01 M citrate buffer (pH 6.0) prior to IF staining.