

A5239

Leader in Biomolecular Solutions for Life Science



GTF2H2C Rabbit pAb

Catalog No.: A5239

Basic Information

Observed MW

44kDa

Calculated MW

44kDa

Category

Polyclonal Antibody

Applications

WB,IHC-P,ELISA

Cross-Reactivity

Human,Rat

Background

Predicted to enable zinc ion binding activity. Predicted to be involved in nucleotide-excision repair and regulation of transcription by RNA polymerase II. Located in nuclear speck.

Recommended Dilutions

WB 1:200 - 1:2000

IHC-P 1:50 - 1:200

ELISA Recommended starting concentration is 1 µg/mL. Please optimize the concentration based on your specific assay requirements.

Immunogen Information

Gene ID

728340

Swiss Prot

Q6P1K8

Immunogen

Recombinant protein (or fragment). This information is considered to be commercially sensitive.

Synonyms

GTF2H2C_2; GTF2H2C

Contact

 www.abclonal.com

Product Information

Source

Rabbit

Isotype

IgG

Purification

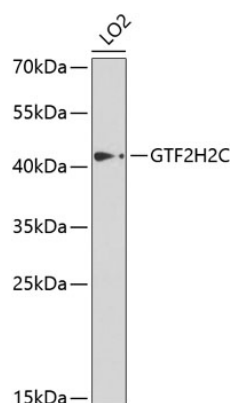
Affinity purification

Storage

Store at -20°C. Avoid freeze / thaw cycles.

Buffer: PBS with 0.02% sodium azide, 50% glycerol, pH7.3.

Validation Data



Western blot analysis of lysates from LO2 cells, using GTF2H2C Rabbit pAb (A5239) at 1:1000 dilution.

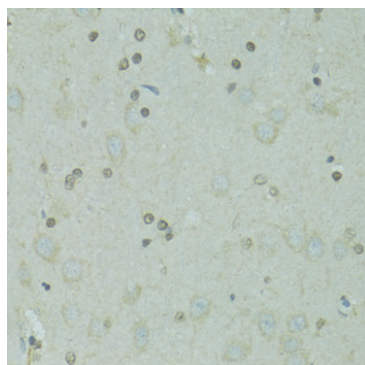
Secondary antibody: HRP-conjugated Goat anti-Rabbit IgG (H+L) (AS014) at 1:10000 dilution.

Lysates/proteins: 25µg per lane.

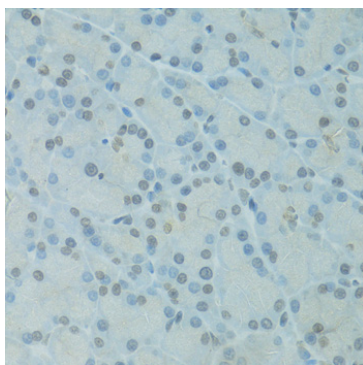
Blocking buffer: 3% nonfat dry milk in TBST.

Detection: ECL Enhanced Kit (RM00021).

Exposure time: 5s.



Immunohistochemistry analysis of paraffin-embedded Rat brain using GTF2H2C Rabbit pAb (A5239) at dilution of 1:100 (40x lens).
Microwave antigen retrieval performed with 0.01M PBS Buffer (pH 7.2) prior to IHC staining.



Immunohistochemistry analysis of paraffin-embedded Rat pancreas using GTF2H2C Rabbit pAb (A5239) at dilution of 1:100 (40x lens).
Microwave antigen retrieval performed with 0.01M PBS Buffer (pH 7.2) prior to IHC staining.