

A5240

Leader in Biomolecular Solutions for Life Science



TOMM6 Rabbit pAb

Catalog No.: A5240

Basic Information

Observed MW

13kDa

Calculated MW

8kDa

Category

Polyclonal Antibody

Applications

WB,IHC-P,ELISA

Cross-Reactivity

Human,Mouse

Background

Predicted to be involved in protein transport. Located in mitochondrion.

Recommended Dilutions

WB 1:500 - 1:1000

IHC-P 1:50 - 1:200

ELISA Recommended starting concentration is 1 µg/mL. Please optimize the concentration based on your specific assay requirements.

Immunogen Information

Gene ID

100188893

Swiss Prot

Q96B49

Immunogen

Recombinant protein (or fragment). This information is considered to be commercially sensitive.

Synonyms

OBTP; TOM6; TOMM6

Contact



www.abclonal.com

Product Information

Source

Rabbit

Isotype

IgG

Purification

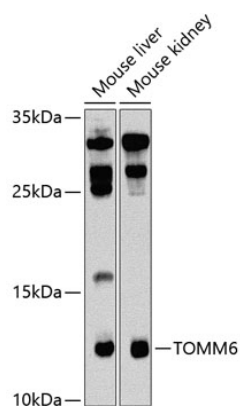
Affinity purification

Storage

Store at -20°C. Avoid freeze / thaw cycles.

Buffer: PBS with 0.02% sodium azide, 50% glycerol, pH7.3.

Validation Data



Western blot analysis of various lysates using TOMM6 Rabbit pAb (A5240) at 1:1000 dilution.
Secondary antibody: HRP-conjugated Goat anti-Rabbit IgG (H+L) (AS014) at 1:10000 dilution.
Lysates/proteins: 25µg per lane.
Blocking buffer: 3% nonfat dry milk in TBST.
Detection: ECL Basic Kit (RM00020).
Exposure time: 90s.

