

A5408

Leader in Biomolecular Solutions for Life Science



## LGI1 Rabbit pAb

Catalog No.: A5408

### Basic Information

#### Observed MW

64kDa

#### Calculated MW

64kDa

#### Category

Polyclonal Antibody

#### Applications

WB,ELISA

#### Cross-Reactivity

Human,Mouse,Rat

### Background

This gene encodes a member of the secreted leucine-rich repeat (LRR) superfamily and shares homology with members of the SLIT protein family. The encoded protein may regulate the activity of voltage-gated potassium channels and may be involved in neuronal growth regulation and cell survival. This gene is rearranged as a result of translocations in glioblastoma cell lines, and it is frequently down-regulated or rearranged in malignant gliomas. Mutations in this gene result in autosomal dominant lateral temporal epilepsy. Alternative splicing results in multiple transcript variants.

### Recommended Dilutions

**WB** 1:500 - 1:2000

**ELISA** Recommended starting concentration is 1 µg/mL. Please optimize the concentration based on your specific assay requirements.

### Immunogen Information

**Gene ID**  
9211

**Swiss Prot**  
O95970

#### Immunogen

Recombinant protein (or fragment). This information is considered to be commercially sensitive.

#### Synonyms

EPT; ETL1; ADLTE; ADPAEF; ADPEAF; IB1099; EPITEMPIN; LGI1

### Contact



[www.abclonal.com](http://www.abclonal.com)

### Product Information

**Source**  
Rabbit

**Isotype**  
IgG

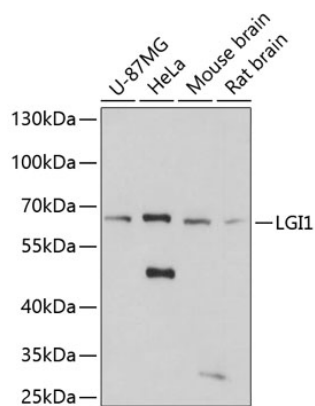
**Purification**  
Affinity purification

#### Storage

Store at -20°C. Avoid freeze / thaw cycles.

Buffer: PBS with 0.01% thimerosal, 50% glycerol, pH7.3.

## Validation Data



Western blot analysis of various lysates using LGI1 Rabbit pAb (A5408) at 1:3000 dilution.

Secondary antibody: HRP-conjugated Goat anti-Rabbit IgG (H+L) (AS014) at 1:10000 dilution.

Lysates/proteins: 25µg per lane.

Blocking buffer: 3% nonfat dry milk in TBST.

Detection: ECL Basic Kit (RM00020).

Exposure time: 90s.